

August 2023
Version 42
Basemap: Geographx 100m

Scale: 1:900,000

TE ARAROA 2023-2024

Southland
Maps 146 - 160

BASEMAP LEGEND: LINZ TOPO 1:50,000

ROADS AND TRACKS ¹

State highway	
Four lanes or more	
Two lanes (includes passing lanes)	
Narrow road	
Vehicle track	
Foot track	
Closed track (see warning note below) ²	
Poled route, track connector	
sealed	
Road surface metalled	
unmetalled	
Tunnel, tunnel under road	
Bridge; two lane, one lane	
Ford	
Gate, locked gate, cattlestop	
Footbridge, cableway, walkwire ³	

RAILWAYS

Double or multiple track	
Single track	
Railway station, yard or siding	
Bridge, tunnel	
Level crossing	
Road over railway	
Railway over road	
Tramway or bush railway	

MISCELLANEOUS

Residential area	
Large buildings	
Isolated building	
Homestead, stockyard	
Glasshouse or greenhouse	
Church, cemetery, grave	
Training track	
Golf course, helipad	
Historic Māori pā, redoubt, monument, plaque or signpost	
Reservoir covered, reservoir uncovered, tank	
Mast, tower, wind machine or wind turbine	
Shipwreck, lighthouse, beacon	
Fence (selection only)	
Pipeline above ground	
Pipeline underground	
Disused water race	
Power line on pylons (actual positions) ³	
Power line on poles (away from roads) ³	
Telephone line (away from roads) ³	
Industrial cableway	
Mine; underground, opencast	
Buried gas pipeline	

TO GIVE A GRID REFERENCE ON THIS MAP (To nearest 100 metres)

East		North	
1. Locate the first VERTICAL grid line to the LEFT of the point.		4. Locate the first HORIZONTAL grid line BELOW the point.	
2. Read the grid values labelling the line in either the top or bottom margin or across the middle of the map.	49	5. Read the grid values labelling the line in either the left or right margin of the map.	34
3. Estimate tenths of a grid square eastwards from the grid line to the point.	0	6. Estimate tenths of a grid square northwards from the grid line to the point.	0
	490		340

RELIEF FEATURES ⁴

Index contour	
Intermediate contours	
Perennial snow and ice contours	
Supplementary contour	
Depression contours	
Shallow depression, small depression or shaft	
Beaconed trig station (with trig identification code)	
Elevation in metres	
Cliff, terrace, slip	
Rock outcrops	
Stopbank, cutting	
Embankment or causeway	
Saddle, cave	
Alpine features	
Moraine	
Moraine wall	
Scree	

WATER FEATURES

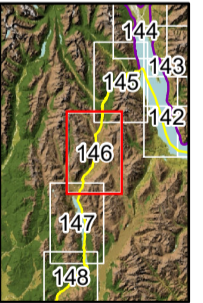
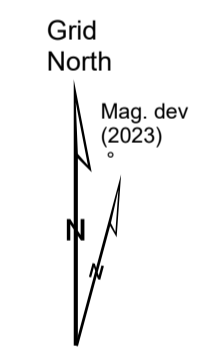
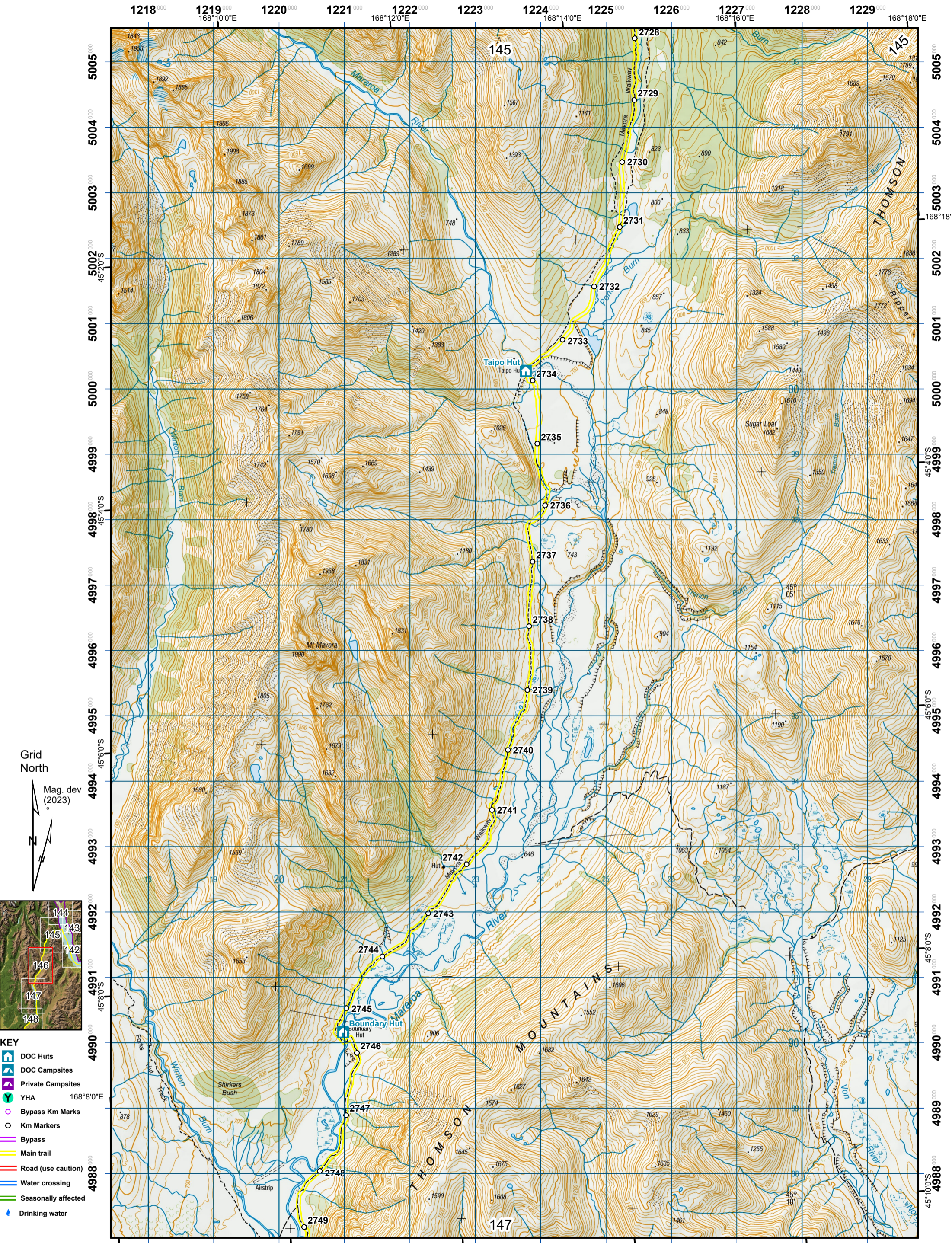
Coastal rocks	
Shoal or reef	
Sand and mud	
Sand	
Shingle	
Swamp	
Boat ramp	
Breakwater, wharf, jetty	
Slipway	
Marine farm, seawall	
Dam, floodgate, weir	
Waterfall, rapids	
Cold spring, hot spring	
Fumarole, geothermal bore	
Watercourse, drain	
Canal; large, small	
Stream disappearing into ground	

VEGETATION FEATURES

Native forest	
Exotic coniferous forest	
Exotic non-coniferous forest	
Scrub	
Scattered scrub	
Shelter belt	
Trees	
Orchard or vineyard or plantation	
Mangroves	

IMPORTANT INFORMATION:

- Representation on this map of a road or track does not necessarily indicate public right of access.
- Closed tracks or routes on this map are defined as being no longer maintained or passable and should not be used by recreationalists. The Department of Conservation or other authorities should be contacted for the latest information on tracks and huts.
- Not all aerial wires, cableways and obstructions that could be hazardous to aircraft are shown on this map.
- Contours and spot elevations in forest and snow areas may be less accurate.



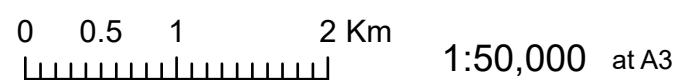
- KEY**
- DOC Huts
 - DOC Campsites
 - Private Campsites
 - YHA
 - Bypass Km Marks
 - Km Markers
 - Bypass
 - Main trail
 - Road (use caution)
 - Water crossing
 - Seasonally affected
 - Drinking water

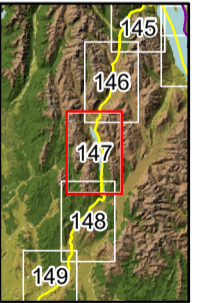
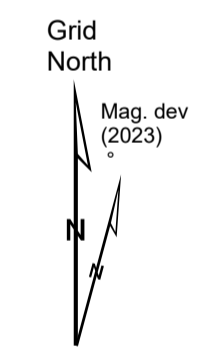
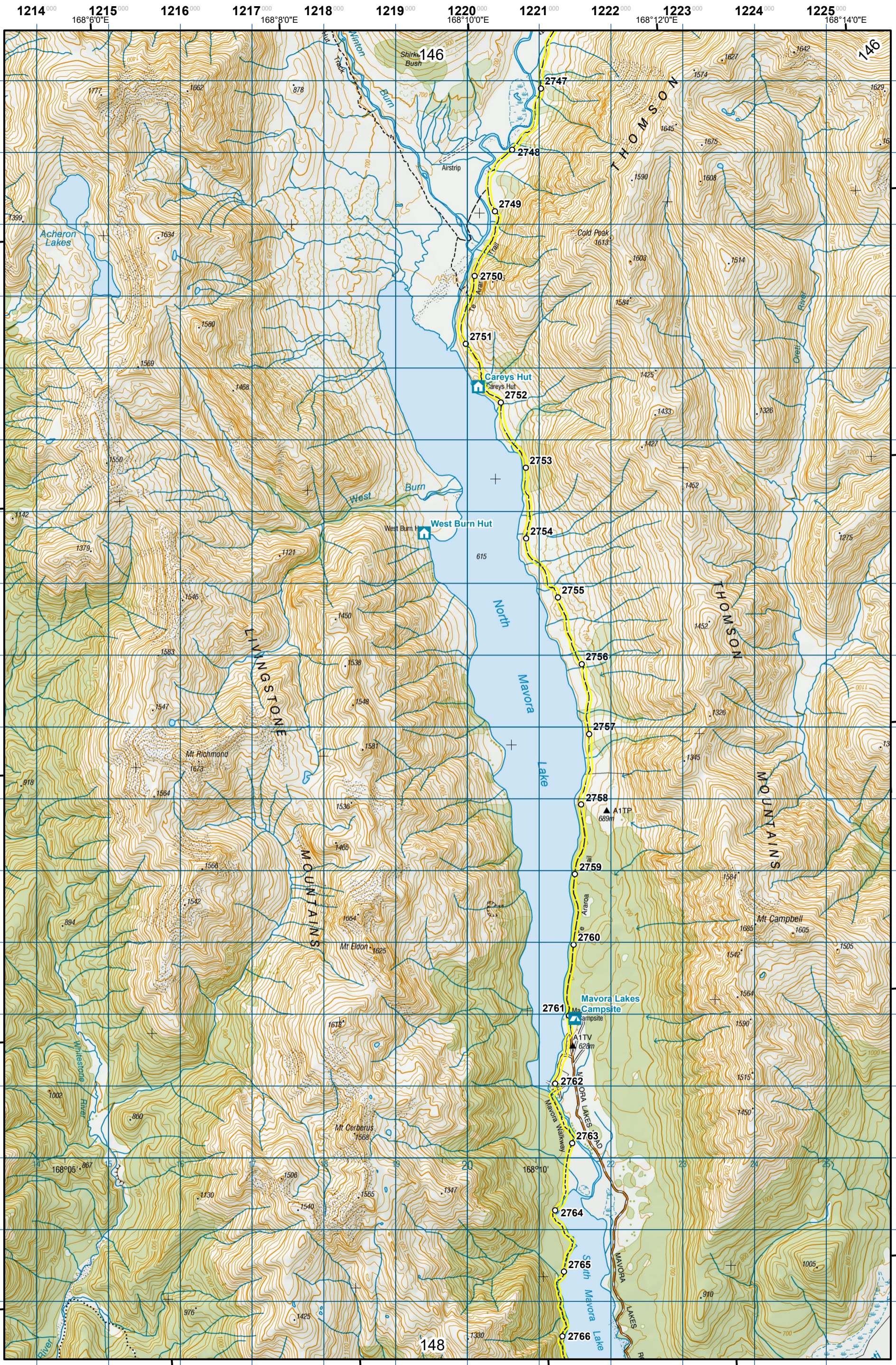


Te Araroa Trail 2023-2024 (v42)
 Last updated: 8/17/2023
 Data sources: DOC, LINZ, Geographx, Corax.
 Basemap(s): LINZ Topographic 1:50,000, Geographx 100m.
 Author(s): Herenga ā Nuku Aotearoa, Te Araroa Trust.
 For seasonally affected or bypass sections, please check
 the Te Araroa Website Trail Alerts page before walking.

TE ARAROA

Mavora Walkway
 Southland (Maps 146 - 160)





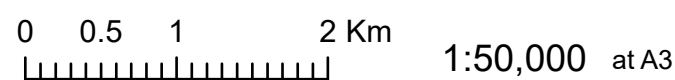
- KEY**
- DOC Huts
 - DOC Campsites
 - Private Campsites
 - YHA
 - Bypass Km Marks
 - Km Markers
 - Bypass
 - Main trail
 - Road (use caution)
 - Water crossing
 - Seasonally affected
 - Drinking water

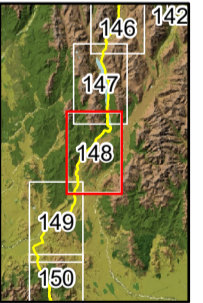
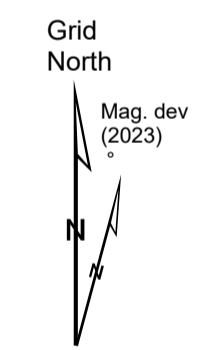
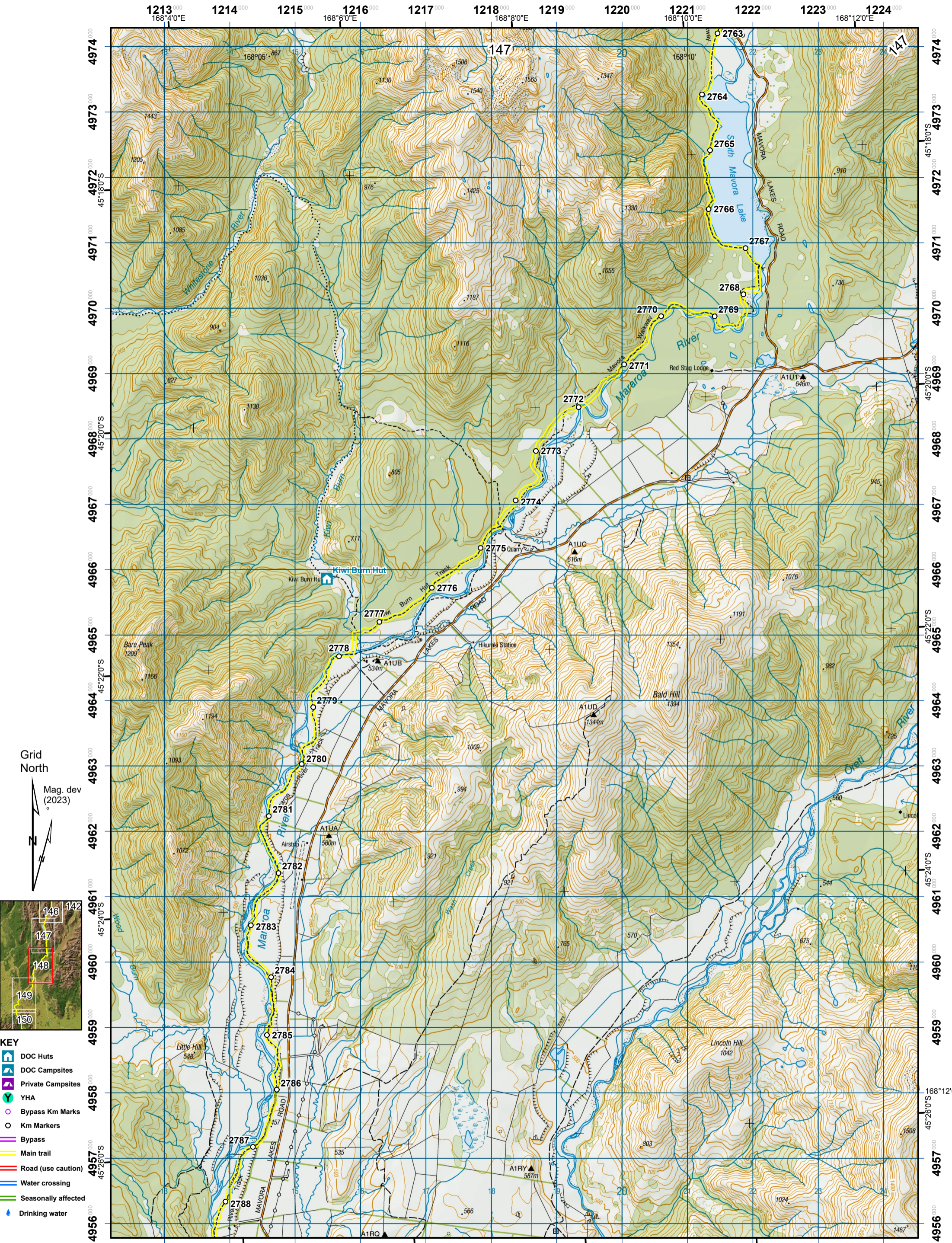


Te Araroa Trail 2023-2024 (v42)
 Last updated: 8/17/2023
 Data sources: DOC, LINZ, Geographx, Corax.
 Basemap(s): LINZ Topographic 1:50,000, Geographx 100m.
 Author(s): Herenga ā Nuku Aotearoa, Te Araroa Trust.
 For seasonally affected or bypass sections, please check the Te Araroa Website Trail Alerts page before walking.

TE ARAROA

Mavora Walkway
 Southland (Maps 146 - 160)





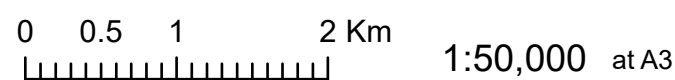
- KEY**
- DOC Huts
 - DOC Campsites
 - Private Campsites
 - YHA
 - Bypass Km Marks
 - Km Markers
 - Bypass
 - Main trail
 - Road (use caution)
 - Water crossing
 - Seasonally affected
 - Drinking water

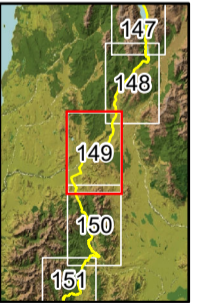
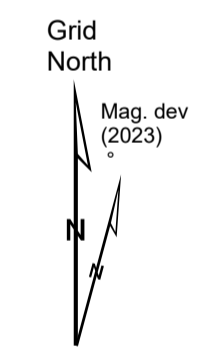
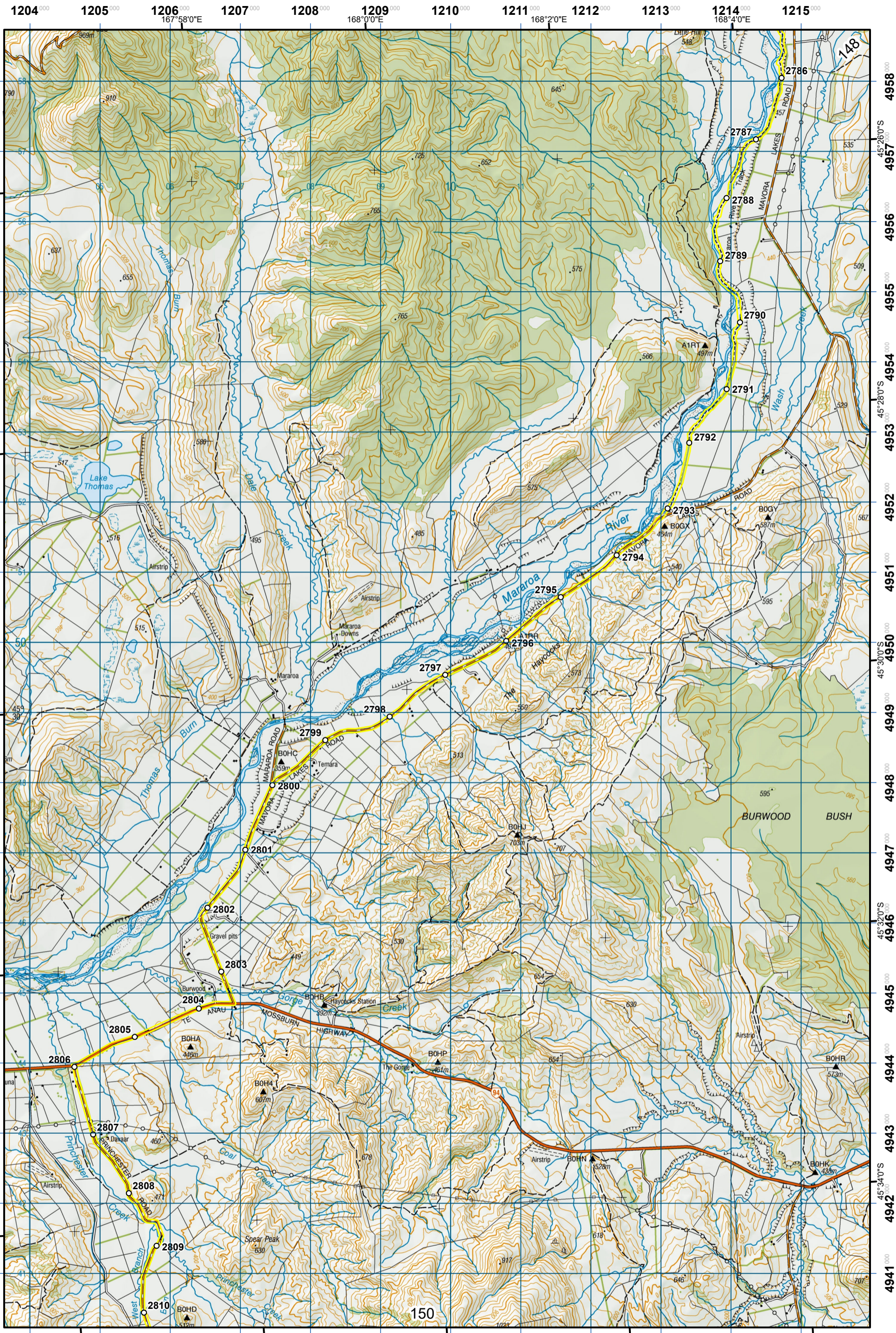


Te Araroa Trail 2023-2024 (v42)
 Last updated: 8/17/2023
 Data sources: DOC, LINZ, Geographx, Corax.
 Basemap(s): LINZ Topographic 1:50,000, Geographx 100m.
 Author(s): Herenga ā Nuku Aotearoa, Te Araroa Trust.
 For seasonally affected or bypass sections, please check the Te Araroa Website Trail Alerts page before walking.

TE ARAROA

**Mavora Walkway
 - Mararoa River Track**
 Southland (Maps 146 - 160)





- KEY**
- DOC Huts
 - DOC Campsites
 - Private Campsites
 - YHA
 - Bypass Km Marks
 - Km Markers
 - Bypass
 - Main trail
 - Road (use caution)
 - Water crossing
 - Seasonally affected
 - Drinking water

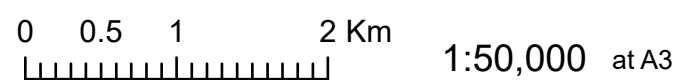


Te Araroa Trail 2023-2024 (v42)
 Last updated: 8/17/2023
 Data sources: DOC, LINZ, Geographx, Corax.
 Basemap(s): LINZ Topographic 1:50,000, Geographx 100m.
 Author(s): Herenga ā Nuku Aotearoa, Te Araroa Trust.
 For seasonally affected or bypass sections, please check
 the Te Araroa Website Trail Alerts page before walking.

TE ARAROA

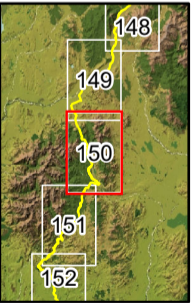
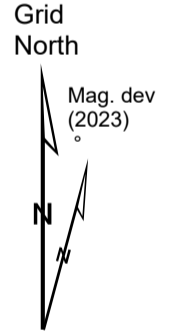
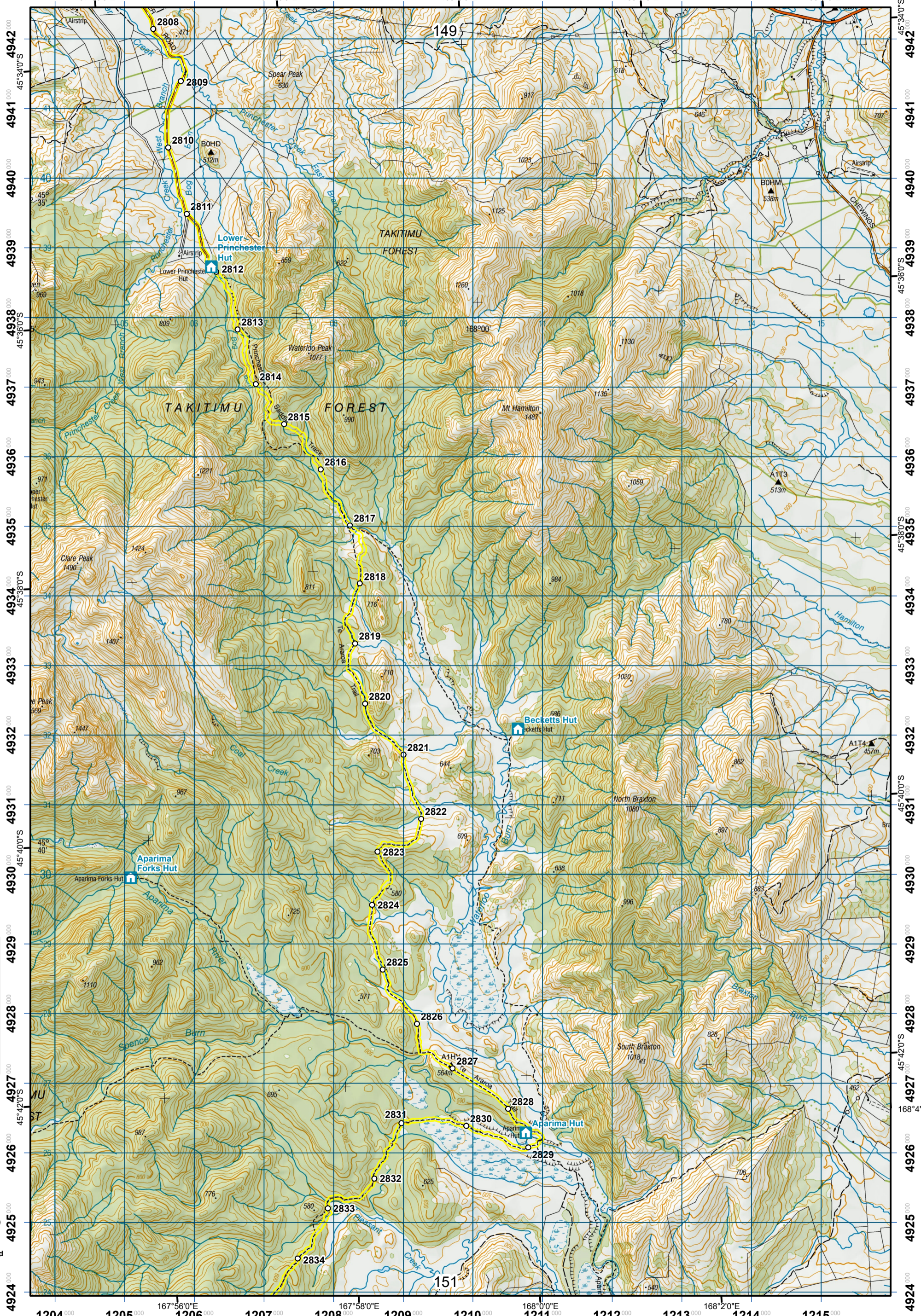
Mararoa River Track

Southland (Maps 146 - 160)



149

1204⁰⁰⁰ 1205⁰⁰⁰ 1206⁰⁰⁰ 1207⁰⁰⁰ 1208⁰⁰⁰ 1209⁰⁰⁰ 1210⁰⁰⁰ 1211⁰⁰⁰ 1212⁰⁰⁰ 1213⁰⁰⁰ 1214⁰⁰⁰ 1215⁰⁰⁰
167°56'0"E 167°58'0"E 168°0'0"E 168°2'0"E 168°4'0"E

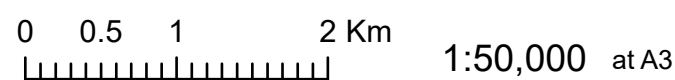


- KEY**
- DOC Huts
 - DOC Campsites
 - Private Campsites
 - YHA
 - Bypass Km Marks
 - Km Markers
 - Bypass
 - Main trail
 - Road (use caution)
 - Water crossing
 - Seasonally affected
 - Drinking water



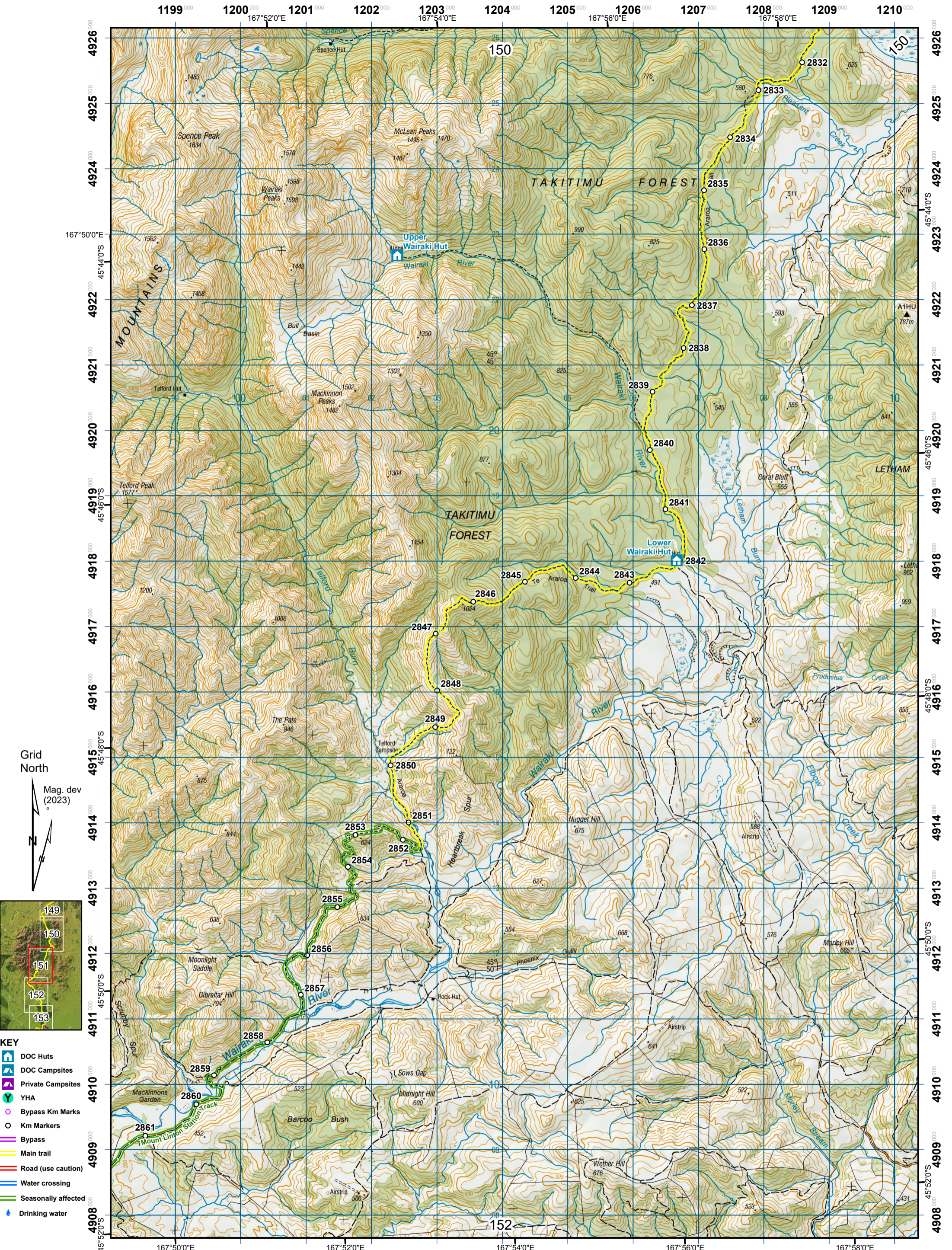
Te Araroa Trail 2023-2024 (v42)
Last updated: 8/17/2023
Data sources: DOC, LINZ, Geographx, Corax.
Basemap(s): LINZ Topographic 1:50,000, Geographx 100m.
Author(s): Herenga ā Nuku Aotearoa, Te Araroa Trust.
For seasonally affected or bypass sections, please check the Te Araroa Website Trail Alerts page before walking.

TE ARAROA

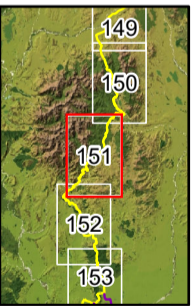


Mararoa River Track
- Takitimu Track
Southland (Maps 146 - 160)

150



Grid North



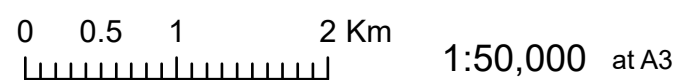
- KEY**
- DOC Huts
 - DOC Campsites
 - Private Campsites
 - YHA
 - Bypass Km Marks
 - Km Markers
 - Bypass
 - Main trail
 - Road (use caution)
 - Water crossing
 - Seasonally affected
 - Drinking water



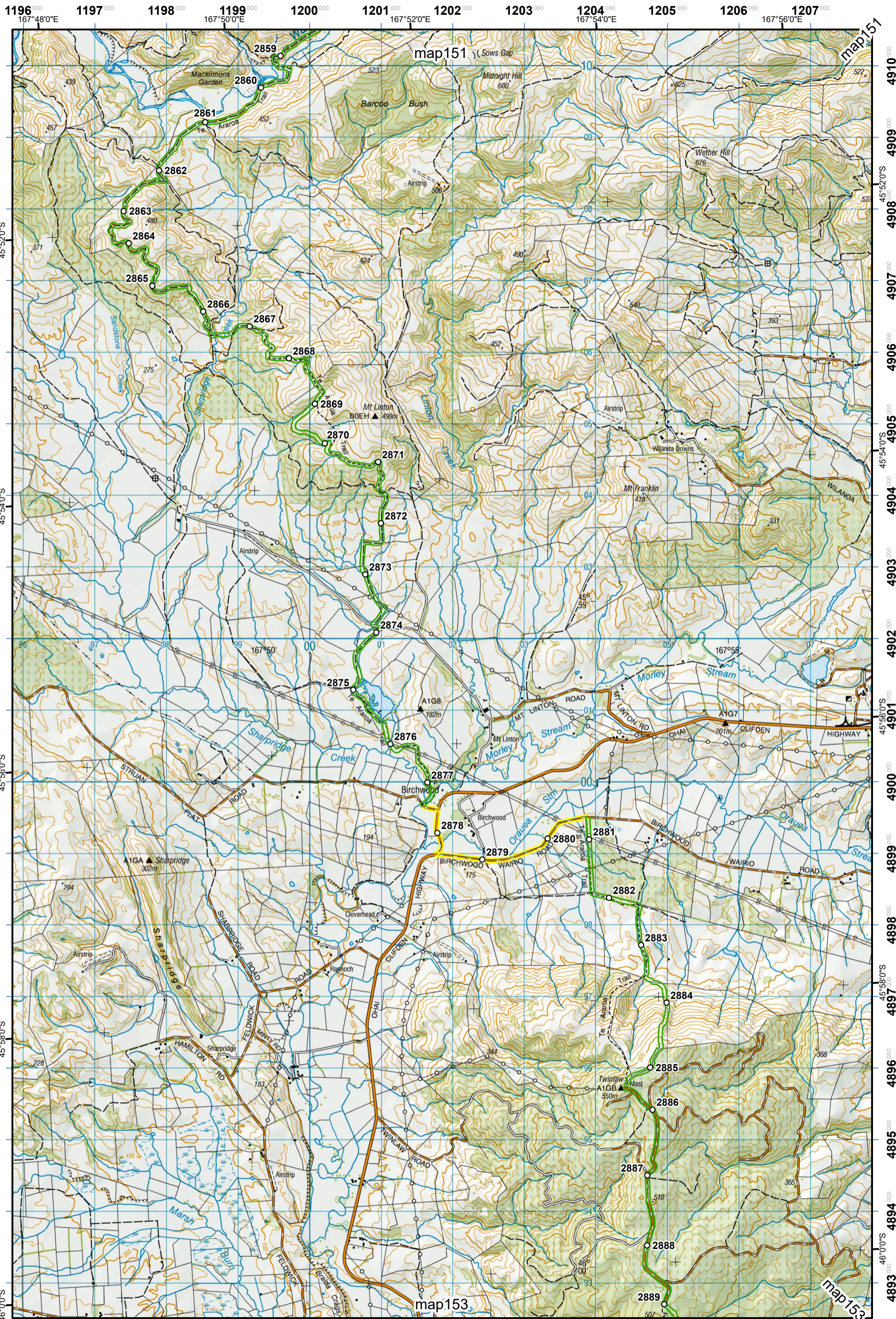
Te Araroa Trail 2023-2024 (v42)
 Last updated: 8/17/2023
 Data sources: DOC, LINZ, Geographx, Corax.
 Basemap(s): LINZ Topographic 1:50,000, Geographx 100m.
 Author(s): Herenga ā Nuku Aotearoa, Te Araroa Trust.
 For seasonally affected or bypass sections, please check the Te Araroa Website Trail Alerts page before walking.

TE ARAROA

Takitimu Track
 - Birchwood to Merrivale
 Southland (Maps 146 - 160)

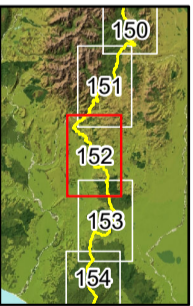


151



Grid North

Mag. dev (2023)



KEY

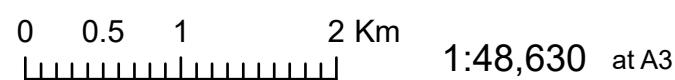
- Drinking water
- DOC Huts
- DOC Campsites
- Private Campsites
- YHA
- Bypass Km Marks
- Km Markers
- Bypass
- Main Trail
- Open
- Road section
- Seasonal
- Water crossing

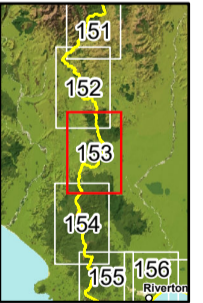
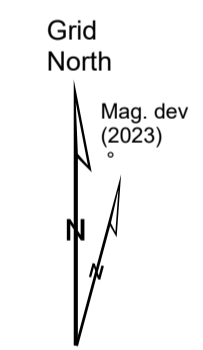


Te Araroa Trail 2023-2024 (v42) (Nov 2023 addendum map)
 Last updated: 11/22/2023
 Data sources: DOC, LINZ, Geographx, Corax.
 Basemap(s): LINZ Topographic 1:50,000, Geographx 100m.
 Author(s): Herenga ā Nuku Aotearoa, Te Araroa Trust.
 For seasonally affected or bypass sections, please check the Te Araroa Website Trail Alerts page before walking.

TE ARAROA

Takitimu Track
 - Birchwood to Merrivale
 Southland (Maps 146 - 160)





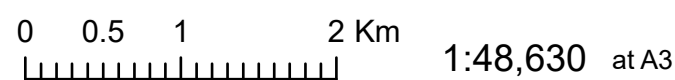
- KEY**
- Drinking water
 - DOC Huts
 - DOC Campsites
 - Private Campsites
 - YHA
 - Bypass Km Marks
 - Km Markers
 - Bypass
 - Main Trail
 - Open
 - Road section
 - Seasonal
 - Water crossing

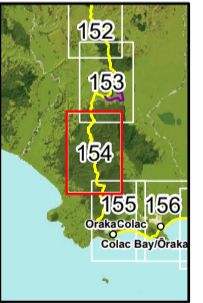
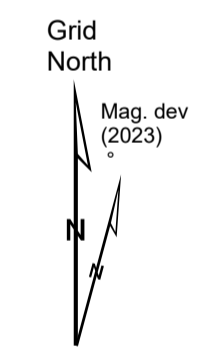


Te Araroa Trail 2023-2024 (v42) (Nov 2023 addendum map)
 Last updated: 11/22/2023
 Data sources: DOC, LINZ, Geographx, Corax.
 Basemap(s): LINZ Topographic 1:50,000, Geographx 100m.
 Author(s): Herenga ā Nuku Aotearoa, Te Araroa Trust.
 For seasonally affected or bypass sections, please check the Te Araroa Website Trail Alerts page before walking.

TE ARAROA

**Birchwood to Merrivale
 - Longwood Forest Track
 Southland (Maps 146 - 160)**



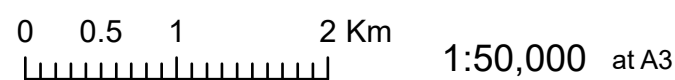


- KEY**
- DOC Huts
 - DOC Campsites
 - Private Campsites
 - YHA
 - Bypass Km Marks
 - Km Markers
 - Bypass
 - Main trail
 - Road (use caution)
 - Water crossing
 - Seasonally affected
 - Drinking water

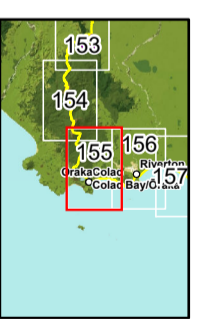
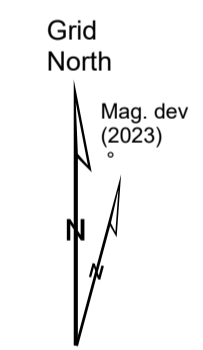


Te Araroa Trail 2023-2024 (v42)
 Last updated: 8/17/2023
 Data sources: DOC, LINZ, Geographix, Corax.
 Basemap(s): LINZ Topographic 1:50,000, Geographix 100m.
 Author(s): Herenga ā Nuku Aotearoa, Te Araroa Trust.
 For seasonally affected or bypass sections, please check the Te Araroa Website Trail Alerts page before walking.

TE ARAROA



Longwood Forest Track
 Southland (Maps 146 - 160)



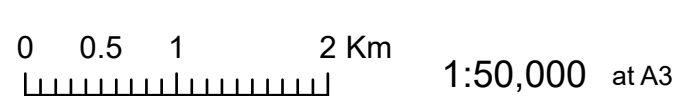
- KEY**
- DOC Huts
 - DOC Campsites
 - Private Campsites
 - YHA
 - Bypass Km Marks
 - Km Markers
 - Bypass
 - Main trail
 - Road (use caution)
 - Water crossing
 - Seasonally affected
 - Drinking water



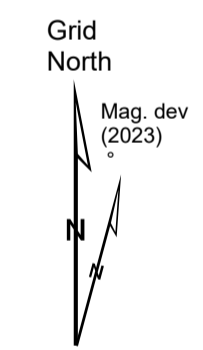
Te Araroa Trail 2023-2024 (v42)
 Last updated: 8/17/2023
 Data sources: DOC, LINZ, Geographx, Corax.
 Basemap(s): LINZ Topographic 1:50,000, Geographx 100m.
 Author(s): Herenga ā Nuku Aotearoa, Te Araroa Trust.
 For seasonally affected or bypass sections, please check the Te Araroa Website Trail Alerts page before walking.

TE ARAROA

Longwood Forest Track
 - Long Hilly Track
 Southland (Maps 146 - 160)



1211 1212 1213 1214 1215 1216 1217 1218 1219 1220 1221 1222 1223

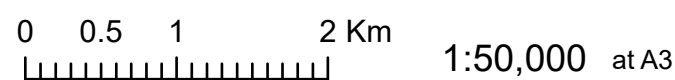


- KEY**
- DOC Huts
 - DOC Campsites
 - Private Campsites
 - YHA
 - Bypass Km Marks
 - Km Markers
 - Bypass
 - Main trail
 - Road (use caution)
 - Water crossing
 - Seasonally affected
 - Drinking water



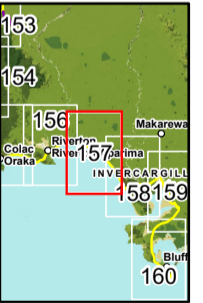
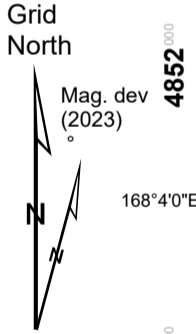
Te Araroa Trail 2023-2024 (v42)
 Last updated: 8/17/2023
 Data sources: DOC, LINZ, Geographx, Corax.
 Basemap(s): LINZ Topographic 1:50,000, Geographx 100m.
 Author(s): Herenga ā Nuku Aotearoa, Te Araroa Trust.
 For seasonally affected or bypass sections, please check the Te Araroa Website Trail Alerts page before walking.

TE ARAROA



Tihaka Beach Track
 - Oreti Beach Track
 Southland (Maps 146 - 160)

1221 000 1222 000 1223 000 1224 000 1225 000 1226 000 1227 000 1228 000 1229 000 1230 000 1231 000 1232 000 1233 000



- KEY**
- DOC Huts
 - DOC Campsites
 - Private Campsites
 - YHA
 - Bypass Km Marks
 - Km Markers
 - Bypass
 - Main trail
 - Road (use caution)
 - Water crossing
 - Seasonally affected
 - Drinking water

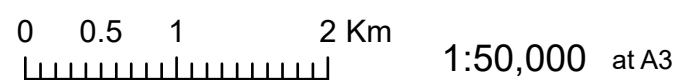


Te Araroa Trail 2023-2024 (v42)
 Last updated: 8/17/2023
 Data sources: DOC, LINZ, Geographx, Corax.
 Basemap(s): LINZ Topographic 1:50,000, Geographx 100m.
 Author(s): Herenga ā Nuku Aotearoa, Te Araroa Trust.
 For seasonally affected or bypass sections, please check the Te Araroa Website Trail Alerts page before walking.

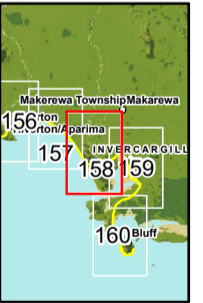
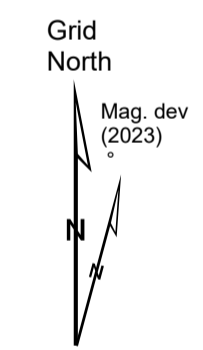
TE ARAROA

Oreti Beach Track

Southland (Maps 146 - 160)



157



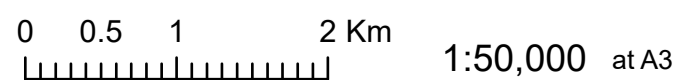
- KEY**
- DOC Huts
 - DOC Campsites
 - Private Campsites
 - YHA
 - Bypass Km Marks
 - Km Markers
 - Bypass
 - Main trail
 - Road (use caution)
 - Water crossing
 - Seasonally affected
 - Drinking water



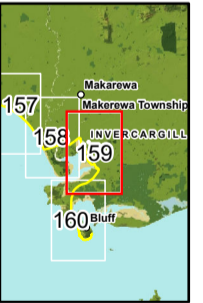
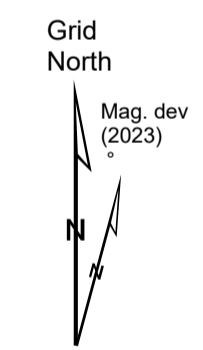
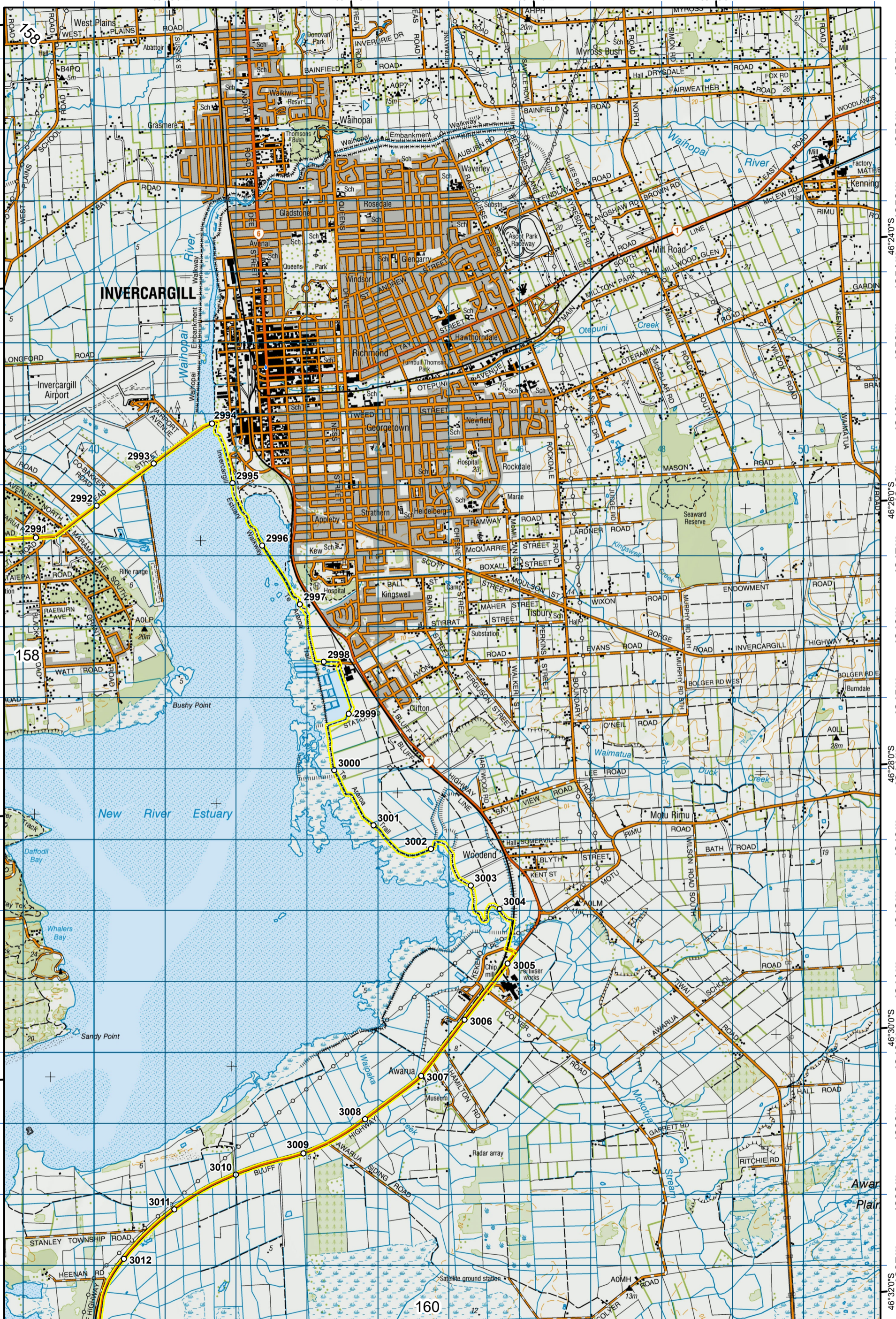
Te Araroa Trail 2023-2024 (v42)
 Last updated: 8/17/2023
 Data sources: DOC, LINZ, Geographx, Corax.
 Basemap(s): LINZ Topographic 1:50,000, Geographx 100m.
 Author(s): Herenga ā Nuku Aotearoa, Te Araroa Trust.
 For seasonally affected or bypass sections, please check the Te Araroa Website Trail Alerts page before walking.

TE ARAROA

Oreti Beach Track
 - Invercargill to Bluff
 Southland (Maps 146 - 160)



1239 000 1240 000 1241 000 1242 000 1244 000 1245 000 1246 000 1247 000 1248 000 1249 000 1250 000 1251 000



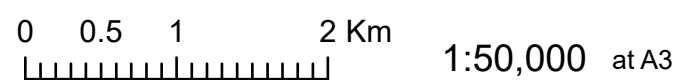
- KEY**
- DOC Huts
 - DOC Campsites
 - Private Campsites
 - YHA
 - Bypass Km Marks
 - Km Markers
 - Bypass
 - Main trail
 - Road (use caution)
 - Water crossing
 - Seasonally affected
 - Drinking water

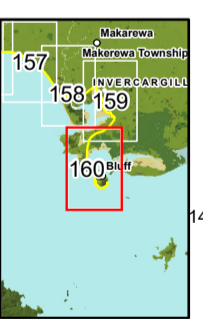
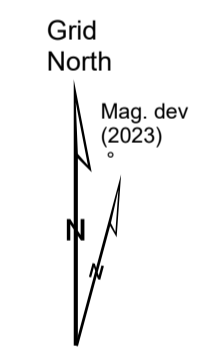
1239 168°18'0"E 1240 1241 168°20'0"E 1242 1243 168°22'0"E 1245 1246 168°24'0"E 1247 1248 168°26'0"E 1249 1250 1251 46°32'0"S 46°30'0"S 46°28'0"S 46°26'0"S 46°24'0"S 46°22'0"S

Te Araroa Trail 2023-2024 (v42)
 Last updated: 8/17/2023
 Data sources: DOC, LINZ, Geographx, Corax.
 Basemap(s): LINZ Topographic 1:50,000, Geographx 100m.
 Author(s): Herenga ā Nuku Aotearoa, Te Araroa Trust.
 For seasonally affected or bypass sections, please check the Te Araroa Website Trail Alerts page before walking.

TE ARAROA

Oreti Beach Track
 - Invercargill to Bluff
 Southland (Maps 146 - 160)





- KEY**
- DOC Huts
 - DOC Campsites
 - Private Campsites
 - YHA
 - Bypass Km Marks
 - Km Markers
 - Bypass
 - Main trail
 - Road (use caution)
 - Water crossing
 - Seasonally affected
 - Drinking water



Te Araroa Trail 2023-2024 (v42)
 Last updated: 8/17/2023
 Data sources: DOC, LINZ, Geographx, Corax.
 Basemap(s): LINZ Topographic 1:50,000, Geographx 100m.
 Author(s): Herenga ā Nuku Aotearoa, Te Araroa Trust.
 For seasonally affected or bypass sections, please check the Te Araroa Website Trail Alerts page before walking.



Invercargill to Bluff
 Southland (Maps 146 - 160)

160