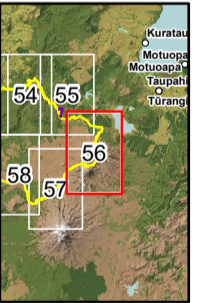
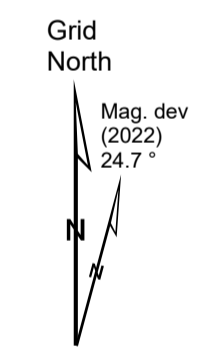
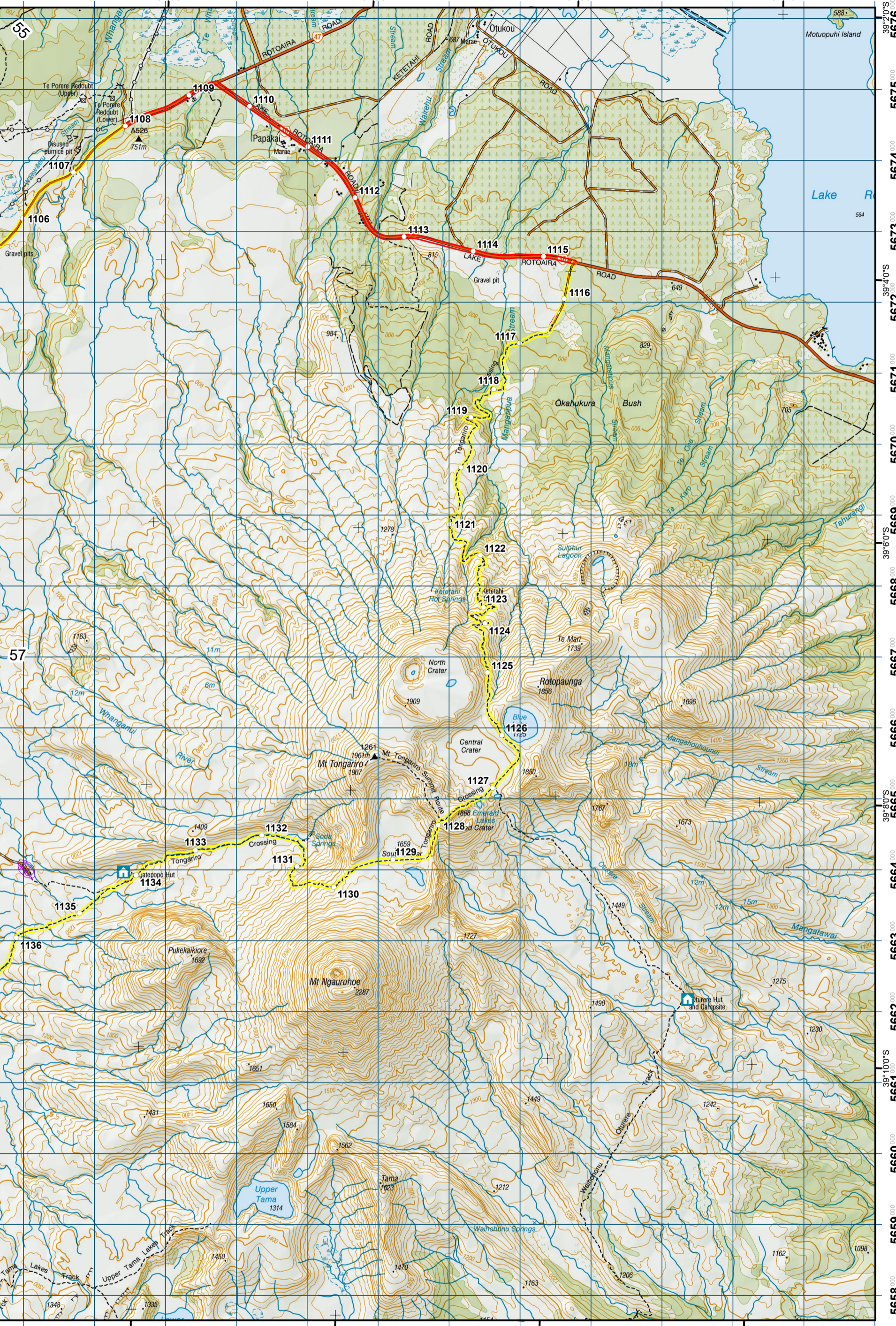


1823 1824 1825 1826 1827 1828 1829 1830 1831 1832 1833 1834 1835



- KEY**
- Te Araroa Trail
 - Main trail
 - Road (use caution)
 - Water crossing
 - Seasonally affected
 - Bypass
 - Kilometre Marks
 - DOC Huts
 - DOC Campsites
 - Private Campsites
 - YHA
 - No Freedom Camping
 - Drinking water

1823 1824 1825 1826 1827 1828 1829 1830 1831 1832 1833 1834 1835

Te Araroa Trail 2022-2023 (v41)
 Last updated: 9/30/2022
 Data sources: DOC, LINZ, Geographx.
 Basemap(s): LINZ Topographic 1:50,000, Geographx 100m.
 Author(s): Herenga ā Nuku Aotearoa, Te Araroa Trust, Corax.
 For seasonally affected or bypass sections, please check the Te Araroa Website Trail Alerts page before walking.

TE ARAROA

42 Traverse
- Tongariro Alpine Crossing
 Manawatū-Whanganui (Maps 48 - 77)

