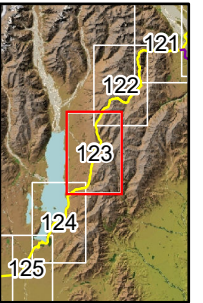
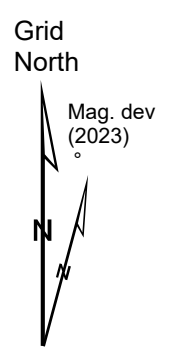
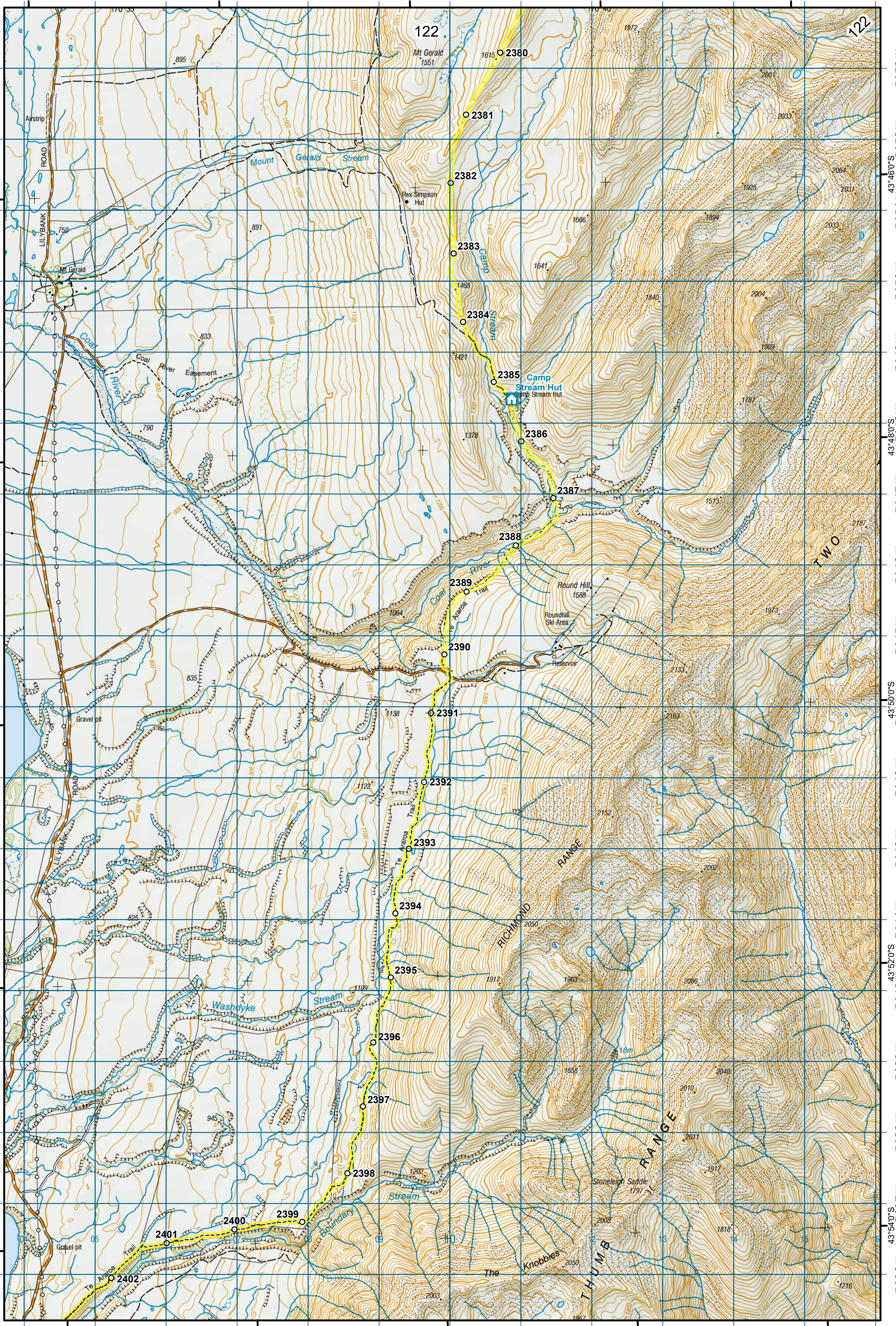


1404 1405 1406 1407 1408 1409 1410 1411 1412 1413 1414 1415 1416



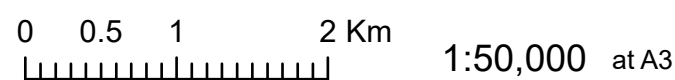
- KEY**
- DOC Huts
 - DOC Campsites
 - Private Campsites
 - YHA
 - Bypass Km Marks
 - Km Markers
 - Bypass
 - Main trail
 - Road (use caution)
 - Water crossing
 - Seasonally affected
 - Drinking water



Te Araroa Trail 2023-2024 (v42)
 Last updated: 8/17/2023
 Data sources: DOC, LINZ, Geographx, Corax.
 Basemap(s): LINZ Topographic 1:50,000, Geographx 100m.
 Author(s): Herenga ā Nuku Aotearoa, Te Araroa Trust.
 For seasonally affected or bypass sections, please check
 the Te Araroa Website Trail Alerts page before walking.

TE ARAROA

Two Thumb Track
Canterbury (Maps 101 - 132)



123