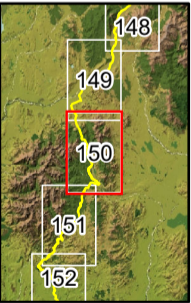
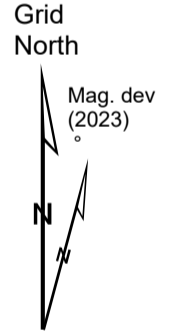
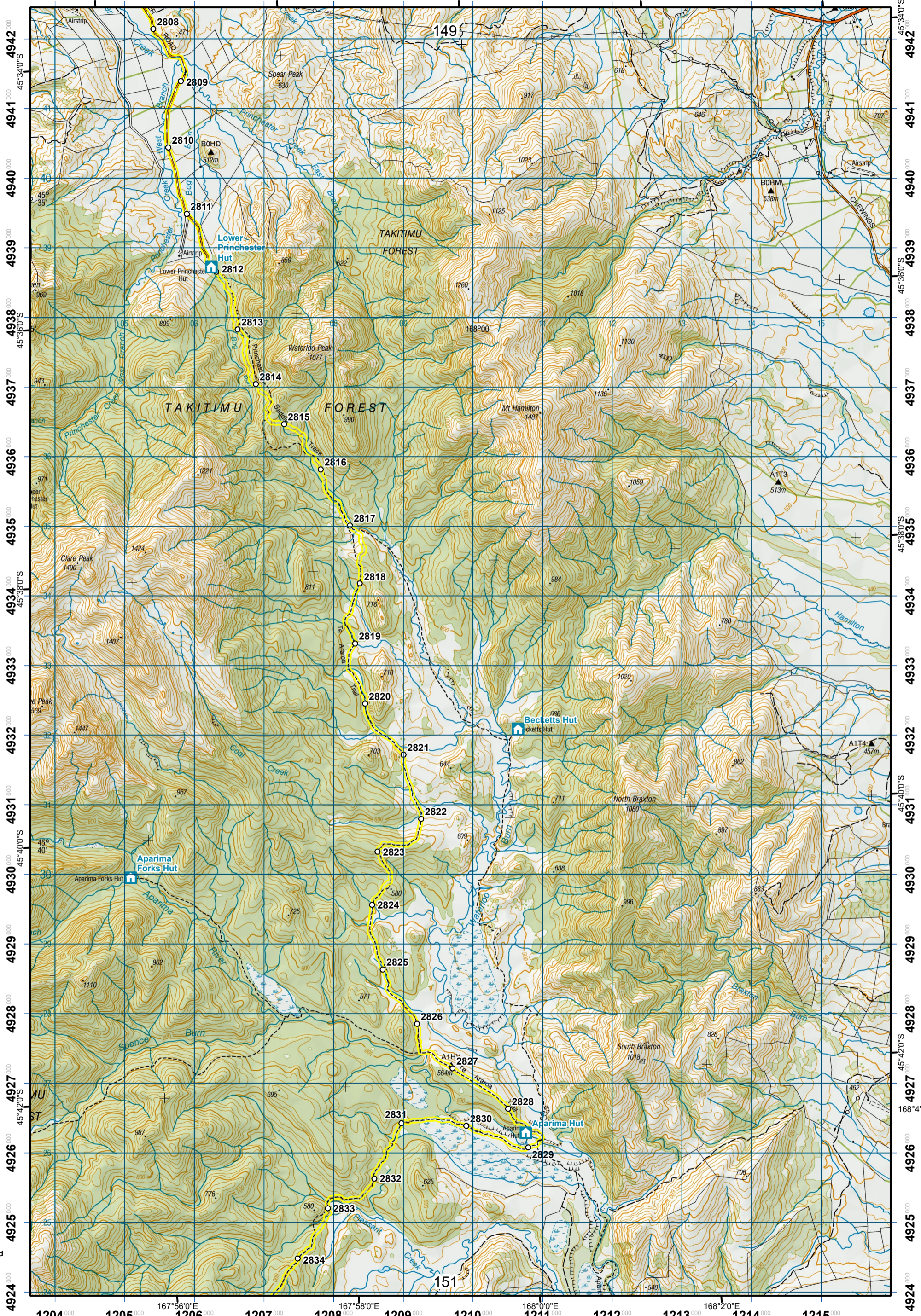


1204⁰⁰⁰ 1205⁰⁰⁰ 1206⁰⁰⁰ 1207⁰⁰⁰ 1208⁰⁰⁰ 1209⁰⁰⁰ 1210⁰⁰⁰ 1211⁰⁰⁰ 1212⁰⁰⁰ 1213⁰⁰⁰ 1214⁰⁰⁰ 1215⁰⁰⁰
167°56'0"E 167°58'0"E 168°0'0"E 168°2'0"E 168°4'0"E

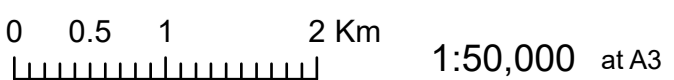


- KEY**
- DOC Huts
 - DOC Campsites
 - Private Campsites
 - YHA
 - Bypass Km Marks
 - Km Markers
 - Bypass
 - Main trail
 - Road (use caution)
 - Water crossing
 - Seasonally affected
 - Drinking water



Te Araroa Trail 2023-2024 (v42)
Last updated: 8/17/2023
Data sources: DOC, LINZ, Geographx, Corax.
Basemap(s): LINZ Topographic 1:50,000, Geographx 100m.
Author(s): Herenga ā Nuku Aotearoa, Te Araroa Trust.
For seasonally affected or bypass sections, please check the Te Araroa Website Trail Alerts page before walking.

TE ARAROA



Mararoa River Track
- Takitimu Track
Southland (Maps 146 - 160)

150