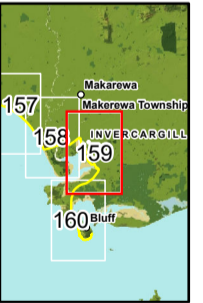
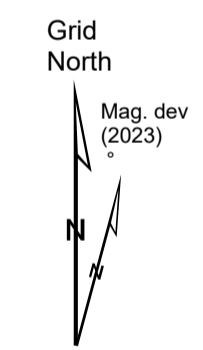
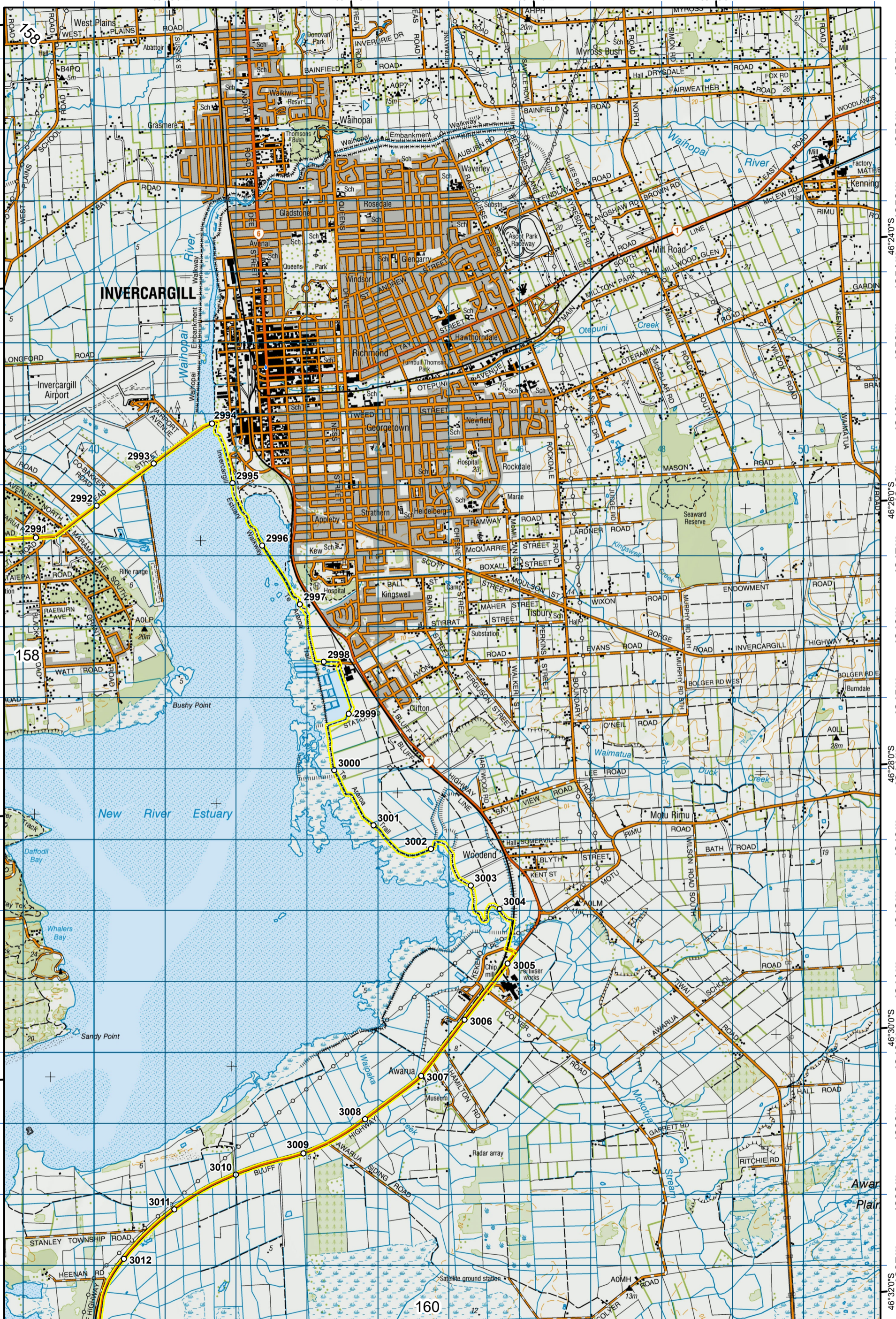


1239 000 1240 000 1241 000 1242 000 1244 000 1245 000 1246 000 1247 000 1248 000 1249 000 1250 000 1251 000



- KEY**
- DOC Huts
 - DOC Campsites
 - Private Campsites
 - YHA
 - Bypass Km Marks
 - Km Markers
 - Bypass
 - Main trail
 - Road (use caution)
 - Water crossing
 - Seasonally affected
 - Drinking water

1239 168°18'0"E 1240 1241 168°20'0"E 1242 1243 168°22'0"E 1244 1245 168°24'0"E 1246 1247 168°26'0"E 1248 1249 1250 1251 46°32'0"S 46°30'0"S 46°28'0"S 46°26'0"S 46°24'0"S 46°22'0"S

Te Araroa Trail 2023-2024 (v42)
 Last updated: 8/17/2023
 Data sources: DOC, LINZ, Geographx, Corax.
 Basemap(s): LINZ Topographic 1:50,000, Geographx 100m.
 Author(s): Herenga ā Nuku Aotearoa, Te Araroa Trust.
 For seasonally affected or bypass sections, please check the Te Araroa Website Trail Alerts page before walking.

TE ARAROA

Oreti Beach Track
 - Invercargill to Bluff
 Southland (Maps 146 - 160)

