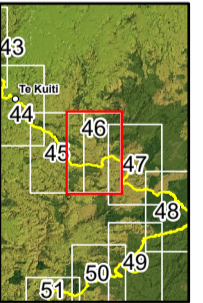
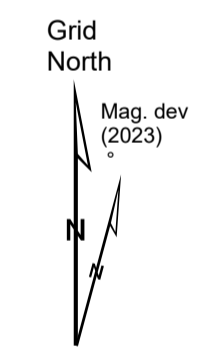
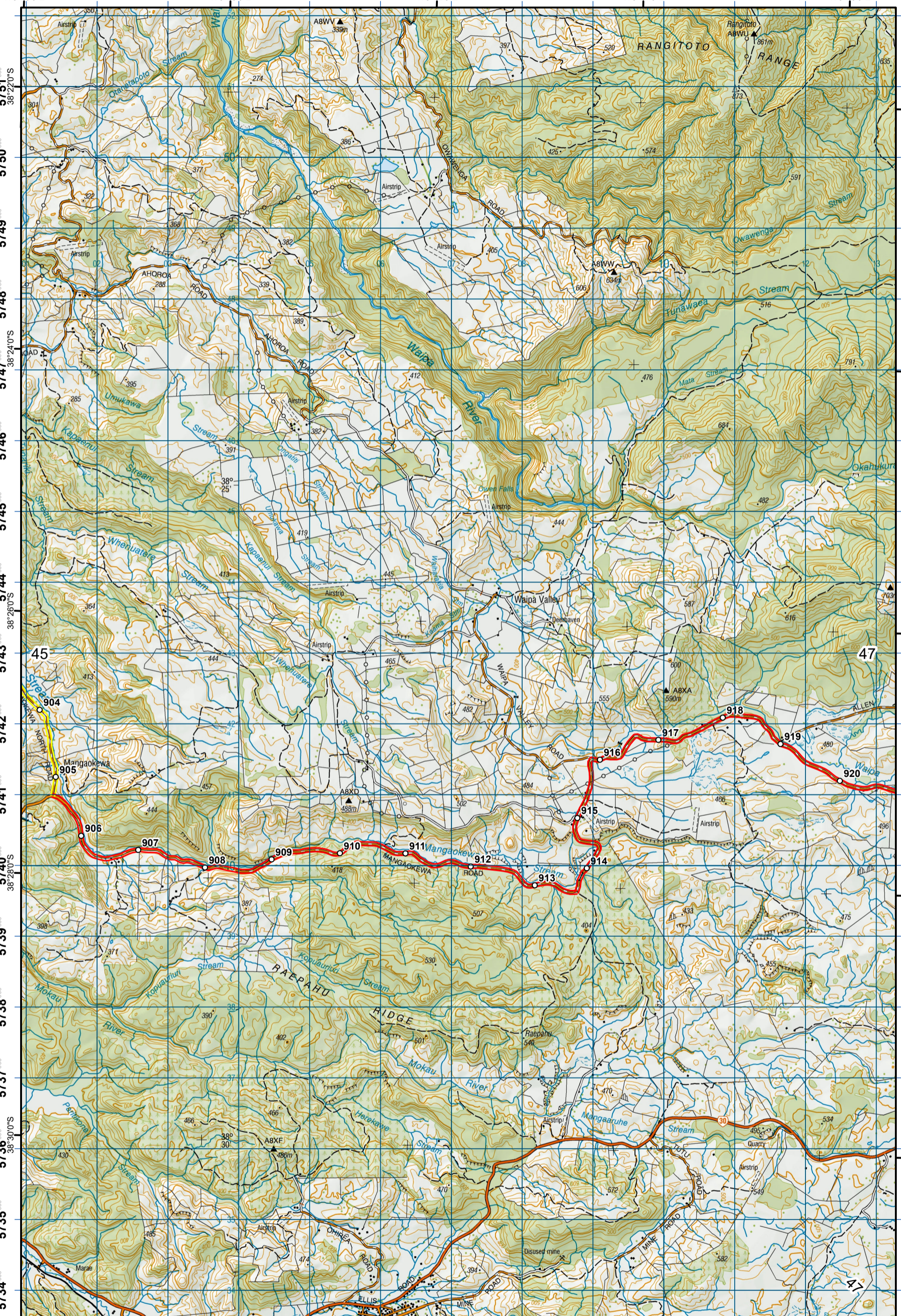


1801 000 1802 000 1803 000 1804 000 1805 000 1806 000 1807 000 1808 000 1809 000 1810 000 1811 000 1812 000 1813 000
175°18'0"E 175°20'0"E 175°22'0"E 175°24'0"E 175°26'0"E



- KEY**
- DOC Huts
 - DOC Campsites
 - Private Campsites
 - YHA
 - Bypass Km Marks
 - Km Markers
 - Bypass
 - Main trail
 - Road (use caution)
 - Water crossing
 - Seasonally affected
 - Drinking water

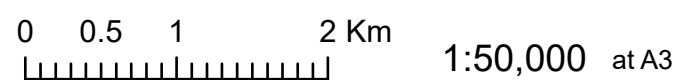


Te Araroa Trail 2023-2024 (v42)
 Last updated: 8/17/2023
 Data sources: DOC, LINZ, Geographx, Corax.
 Basemap(s): LINZ Topographic 1:50,000, Geographx 100m.
 Author(s): Herenga ā Nuku Aotearoa, Te Araroa Trust.
 For seasonally affected or bypass sections, please check the Te Araroa Website Trail Alerts page before walking.

TE ARAROA

Te Kuiti to Pureora

Waikato (Maps 34 - 47)



46