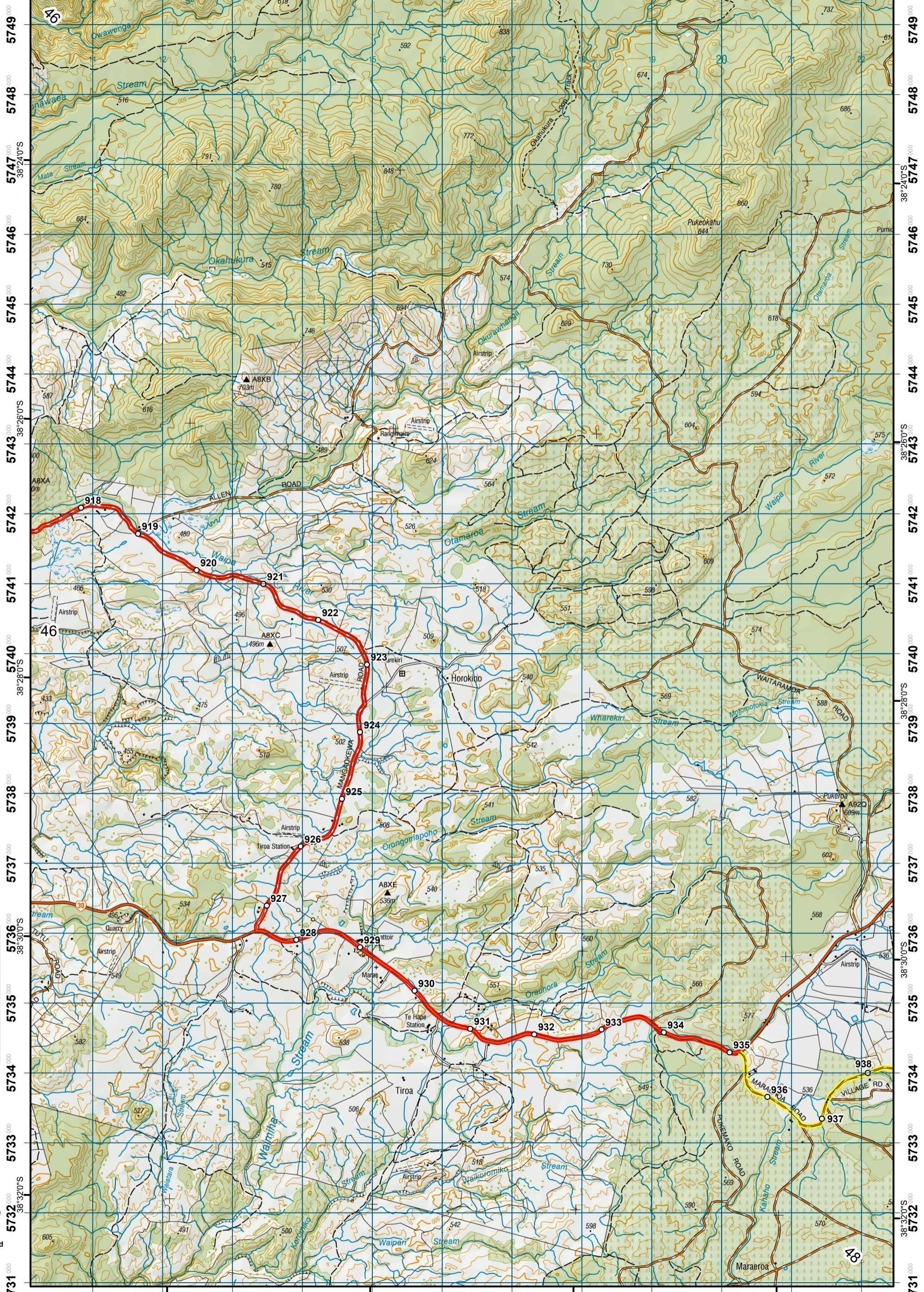


1811 000 1812 000 1813 000 1814 000 1815 000 1816 000 1817 000 1818 000 1819 000 1820 000 1821 000 1822 000

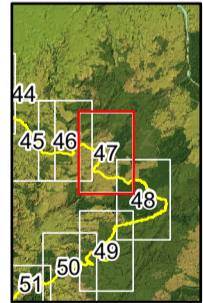
175°26'0"E 175°28'0"E 175°30'0"E 175°32'0"E



5749 000 5748 000 5747 000 5746 000 5745 000 5744 000 5743 000 5742 000 5741 000 5740 000 5739 000 5738 000 5737 000 5736 000 5735 000 5734 000 5733 000 5732 000 5731 000

5749 000 5748 000 5747 000 5746 000 5745 000 5744 000 5743 000 5742 000 5741 000 5740 000 5739 000 5738 000 5737 000 5736 000 5735 000 5734 000 5733 000 5732 000 5731 000

Grid North



- KEY**
- DOC Huts
 - DOC Campsites
 - Private Campsites
 - YHA
 - Bypass Km Marks
 - Km Markers
 - Bypass
 - Main trail
 - Road (use caution)
 - Water crossing
 - Seasonally affected
 - Drinking water



Te Araroa Trail 2023-2024 (v42)
 Last updated: 8/17/2023
 Data sources: DOC, LINZ, Geographx, Corax.
 Basemap(s): LINZ Topographic 1:50,000, Geographx 100m.
 Author(s): Herenga ā Nuku Aotearoa, Te Araroa Trust.
 For seasonally affected or bypass sections, please check the Te Araroa Website Trail Alerts page before walking.

TE ARAROA

Te Kuiti to Pureora

Waikato (Maps 34 - 47)

