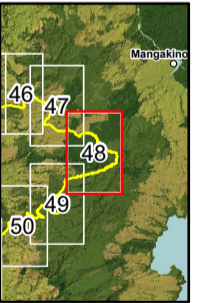
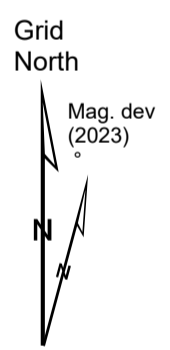
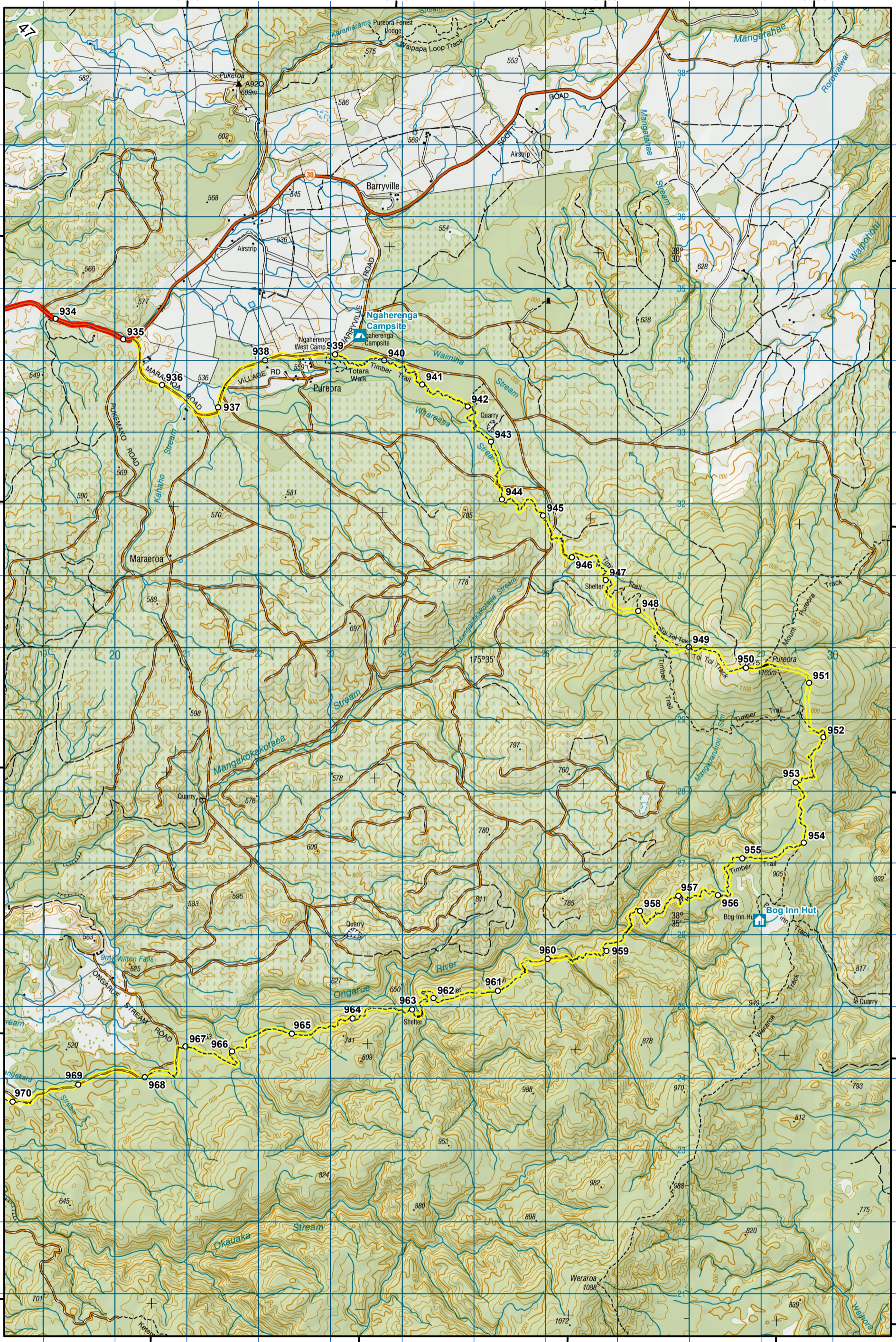


1819 000 1820 000 1821 000 1822 000 1823 000 1824 000 1825 000 1826 000 1827 000 1828 000 1829 000 1830 000
175°32'0"E 175°34'0"E 175°36'0"E 175°38'0"E



- KEY**
- DOC Huts
 - DOC Campsites
 - Private Campsites
 - YHA
 - Bypass Km Marks
 - Km Markers
 - Bypass
 - Main trail
 - Road (use caution)
 - Water crossing
 - Seasonally affected
 - Drinking water



Te Araroa Trail 2023-2024 (v42)
Last updated: 8/17/2023
Data sources: DOC, LINZ, Geographx, Corax.
Basemap(s): LINZ Topographic 1:50,000, Geographx 100m.
Author(s): Herenga ā Nuku Aotearoa, Te Araroa Trust.
For seasonally affected or bypass sections, please check the Te Araroa Website Trail Alerts page before walking.

TE ARAROA

Te Kuiti to Pureora
- Pureora Forest - The Timber Trail
Manawatū-Whanganui (Maps 48 - 77)

