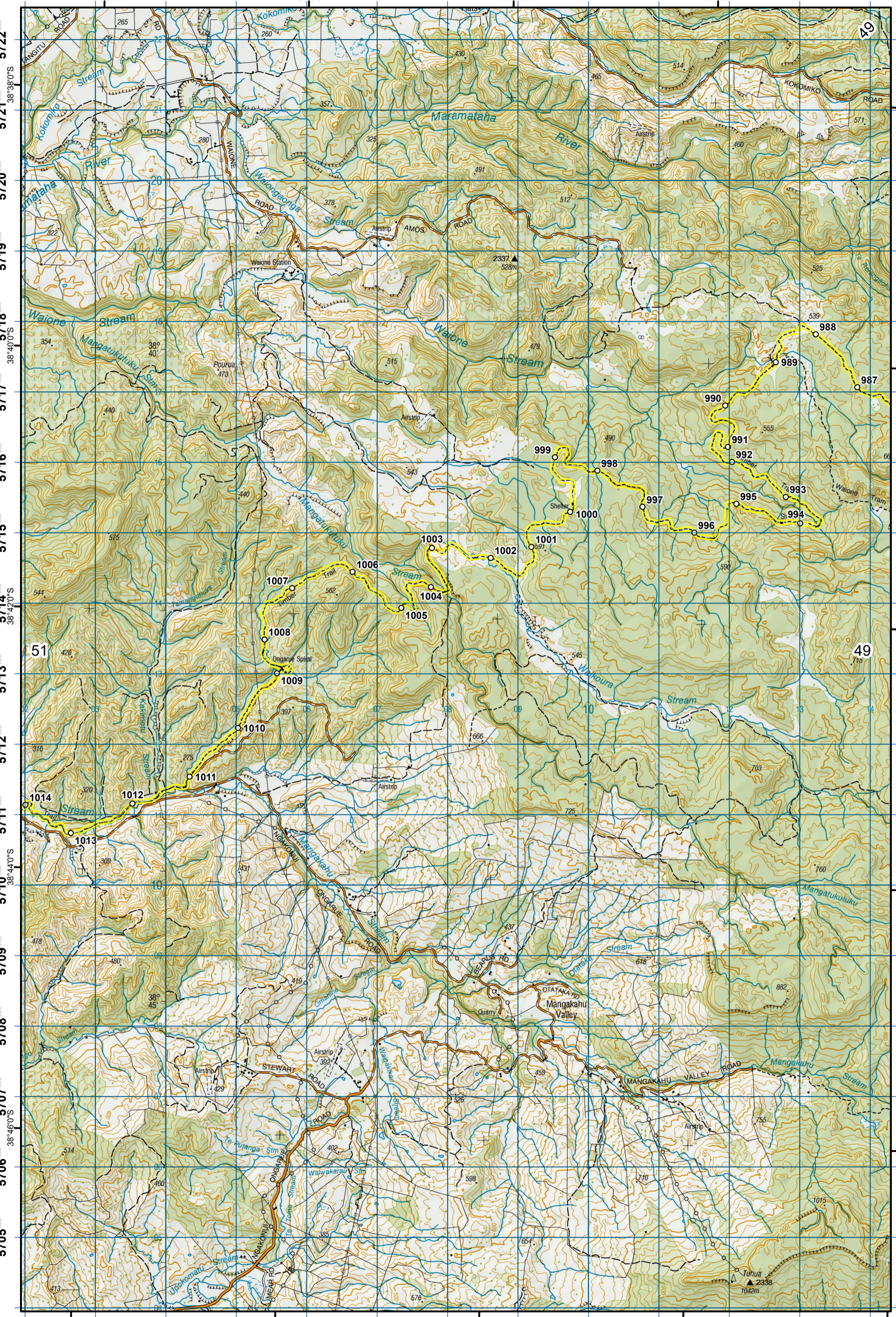
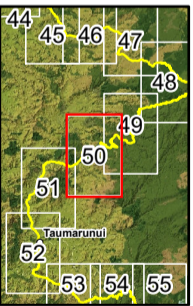


1802 1803 1804 1805 1806 1807 1808 1809 1810 1811 1812 1813 1814



Grid North

Mag. dev (2023)



- KEY**
- DOC Huts
  - DOC Campsites
  - Private Campsites
  - YHA
  - Bypass Km Marks
  - Km Markers
  - Bypass
  - Main trail
  - Road (use caution)
  - Water crossing
  - Seasonally affected
  - Drinking water



**Te Araroa Trail 2023-2024 (v42)**  
 Last updated: 8/17/2023  
 Data sources: DOC, LINZ, Geographx, Corax.  
 Basemap(s): LINZ Topographic 1:50,000, Geographx 100m.  
 Author(s): Herenga ā Nuku Aotearoa, Te Araroa Trust.  
 For seasonally affected or bypass sections, please check the Te Araroa Website Trail Alerts page before walking.

# TE ARAROA

Pureroa Forest - The Timber Trail

Manawatū-Whanganui (Maps 48 - 77)

