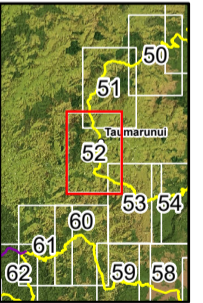
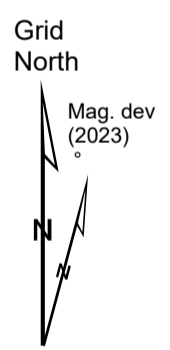
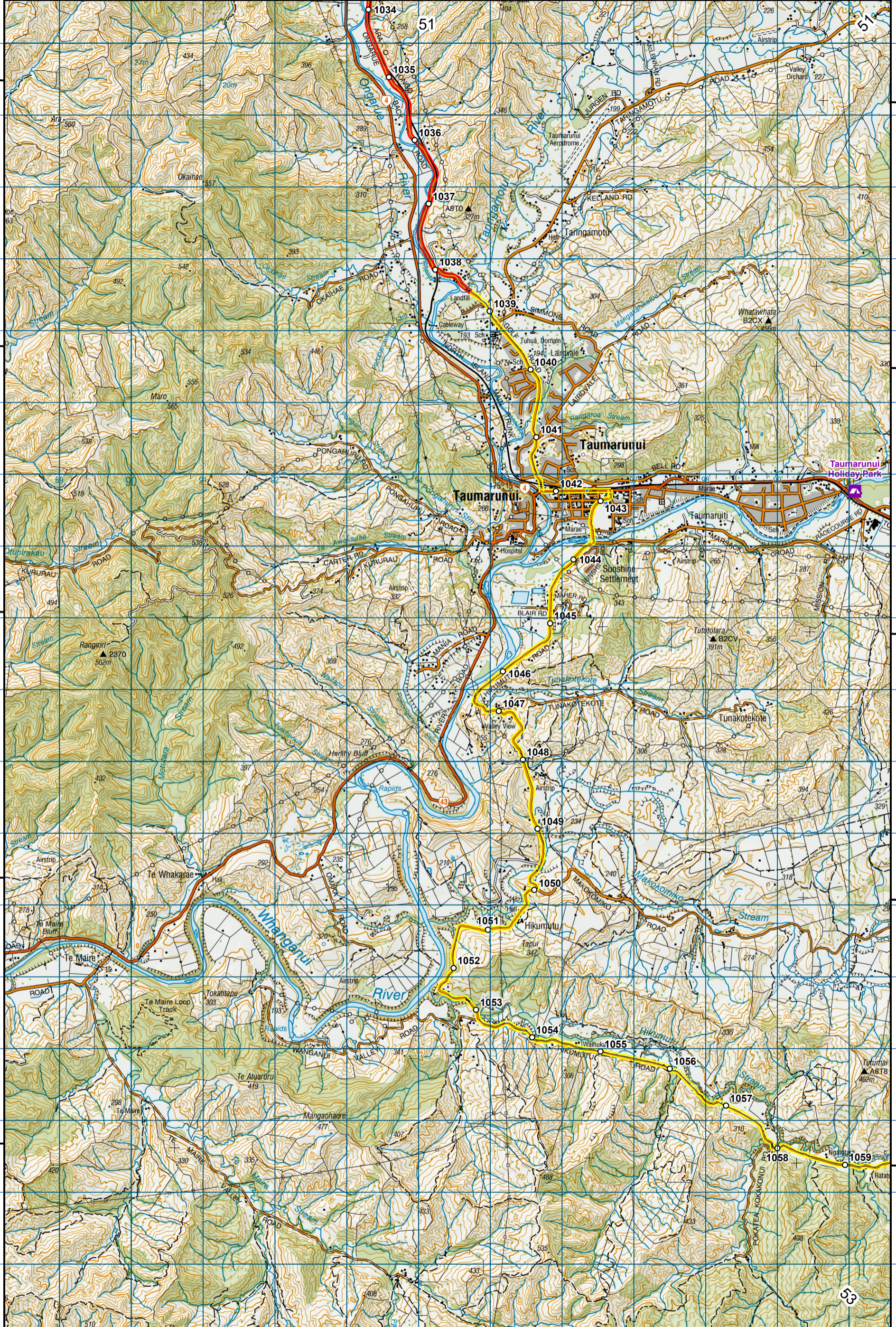


1789 000 1790 000 1791 000 1792 000 1793 000 1794 000 1795 000 1796 000 1797 000 1798 000 1799 000 1800 000
175°12'0"E 175°14'0"E 175°16'0"E 175°18'0"E



- KEY**
- DOC Huts
 - DOC Campsites
 - Private Campsites
 - YHA
 - Bypass Km Marks
 - Km Markers
 - Bypass
 - Main trail
 - Road (use caution)
 - Water crossing
 - Seasonally affected
 - Drinking water



Te Araroa Trail 2023-2024 (v42)
 Last updated: 8/17/2023
 Data sources: DOC, LINZ, Geographx, Corax.
 Basemap(s): LINZ Topographic 1:50,000, Geographx 100m.
 Author(s): Herenga ā Nuku Aotearoa, Te Araroa Trust.
 For seasonally affected or bypass sections, please check the Te Araroa Website Trail Alerts page before walking.

TE ARAROA

Pureroa Forest - The Timber Trail
 - 42 Traverse
 Manawatū-Whanganui (Maps 48 - 77)

