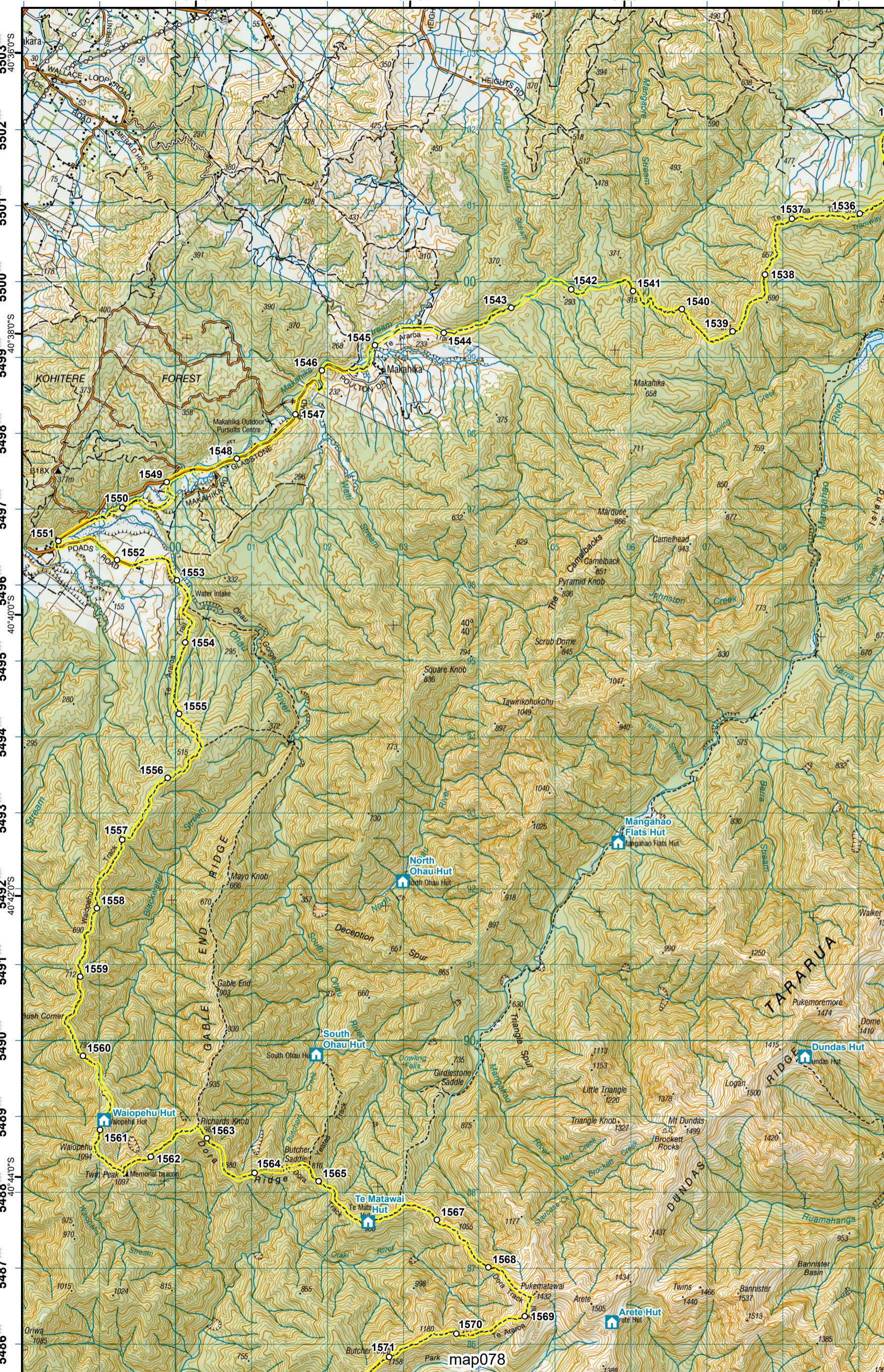
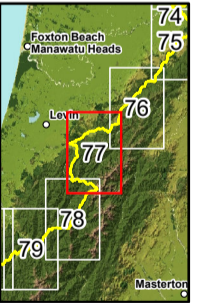
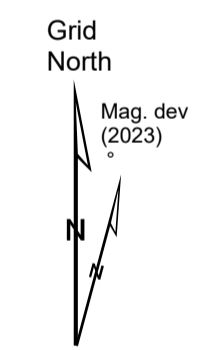


1798 1799 1800 1801 1802 1803 1804 1805 1806 1807 1808 1809



5503 5502 5501 5500 5499 5498 5497 5496 5495 5494 5493 5492 5491 5490 5489 5488 5487 5486



- KEY**
- Drinking water
 - DOC Huts
 - DOC Campsites
 - Private Campsites
 - YHA
 - Bypass Km Marks
 - Km Markers
 - Bypass
 - Main Trail
 - Open
 - Road section
 - Seasonal
 - Water crossing



Te Araroa Trail 2023-2024 (v42) (Nov 2023 addendum map)
 Last updated: 11/22/2023
 Data sources: DOC, LINZ, Geographx, Corax.
 Basemap(s): LINZ Topographic 1:50,000, Geographx 100m.
 Author(s): Herenga ā Nuku Aotearoa, Te Araroa Trust.
 For seasonally affected or bypass sections, please check the Te Araroa Website Trail Alerts page before walking.

TE ARAROA

Massey to Levin
 - Tararua Ranges
 Manawatū-Whanganui (Maps 48 - 77)

