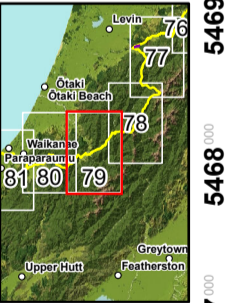
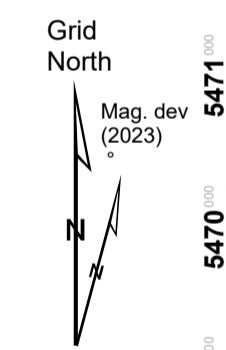
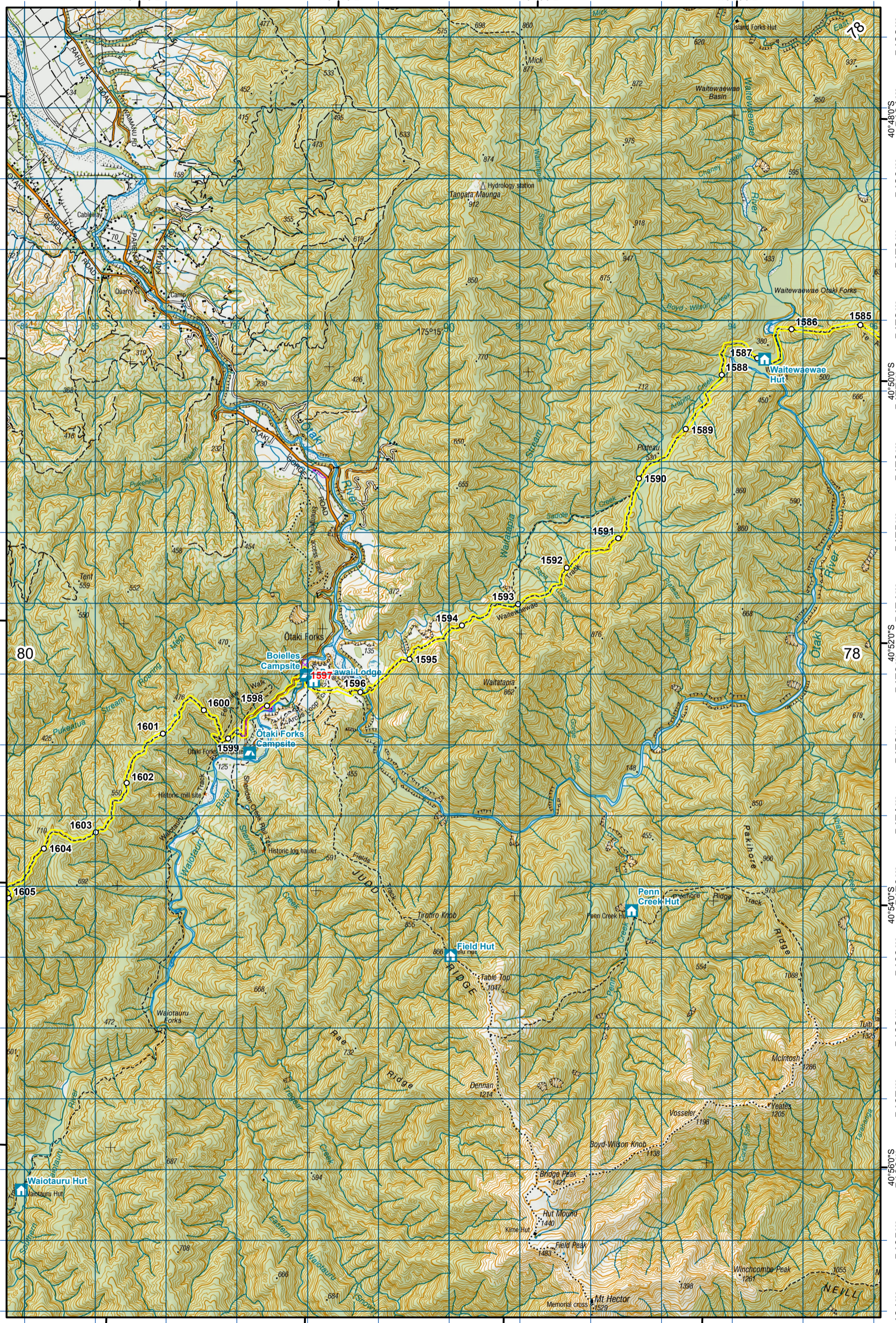


1784 1785 1786 1787 1788 1789 1790 1791 1792 1793 1794 1795 1796



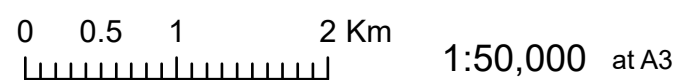
- KEY**
- DOC Huts
  - DOC Campsites
  - Private Campsites
  - YHA
  - Bypass Km Marks
  - Km Markers
  - Bypass
  - Main trail
  - Road (use caution)
  - Water crossing
  - Seasonally affected
  - Drinking water



Te Araroa Trail 2023-2024 (v42)  
 Last updated: 8/17/2023  
 Data sources: DOC, LINZ, Geographx, Corax.  
 Basemap(s): LINZ Topographic 1:50,000, Geographx 100m.  
 Author(s): Herenga ā Nuku Aotearoa, Te Araroa Trust.  
 For seasonally affected or bypass sections, please check the Te Araroa Website Trail Alerts page before walking.

# TE ARAROA

Tararua Ranges  
 - Pukeatua  
 Wellington (Maps 78 - 84)



# 79